

LOC/DME I-FLQ 110.3 Chan 40	APP CRS 176°	Rwy Ldg 13400 TDZE 562 Apt Elev 607
---	------------------------	--

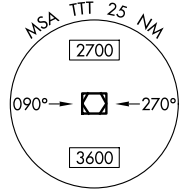
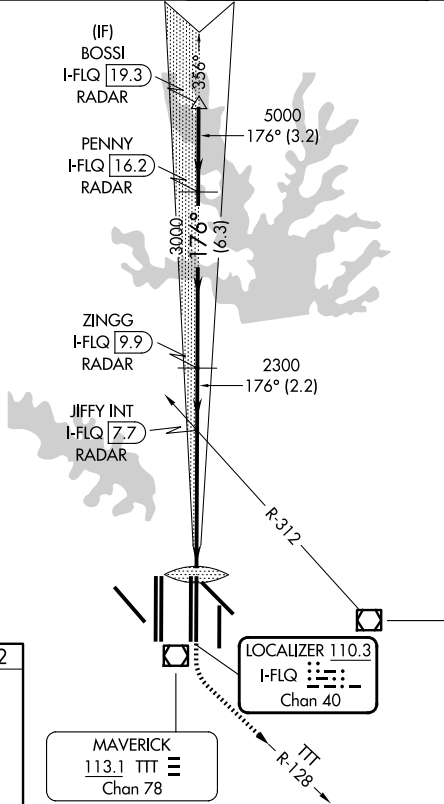
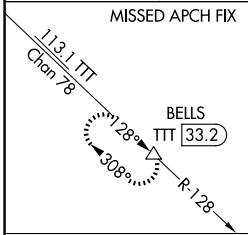
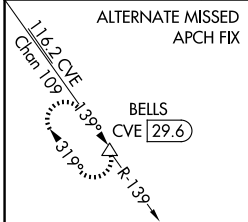
CONVERGING ILS RWY 17C

DALLAS-FORT WORTH INTL (DFW)

▼ DME or RADAR required.
Simultaneous approach authorized with Converging ILS Rwy 13R.

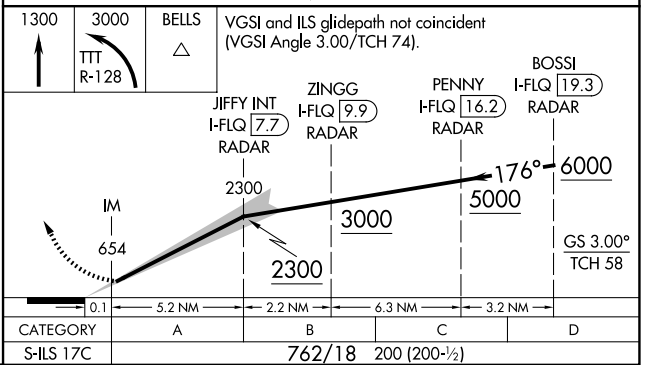
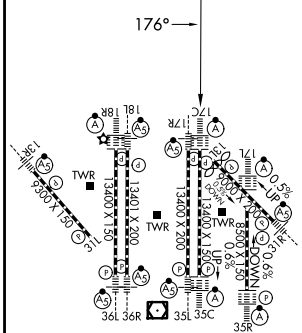
ALSF-2 MISSED APPROACH: Climb to 1300 then climbing left turn to 3000 on TTT VOR/DME R-128 to BELLS/TTT 33.2 DME and hold.

D-ATIS 123.775	LONE STAR APP CON 127.075	DFW TOWER 126.55 127.5 (E) 124.15 134.9 (W)	GND CON 121.65 121.8 (E) 121.85 (W)
--------------------------	-------------------------------------	---	---



RADAR REQUIRED

ELEV 607	D	TDZE 562
----------	----------	----------



SC-2, 11 JUN 2026 to 09 JUL 2026

SC-2, 11 JUN 2026 to 09 JUL 2026