

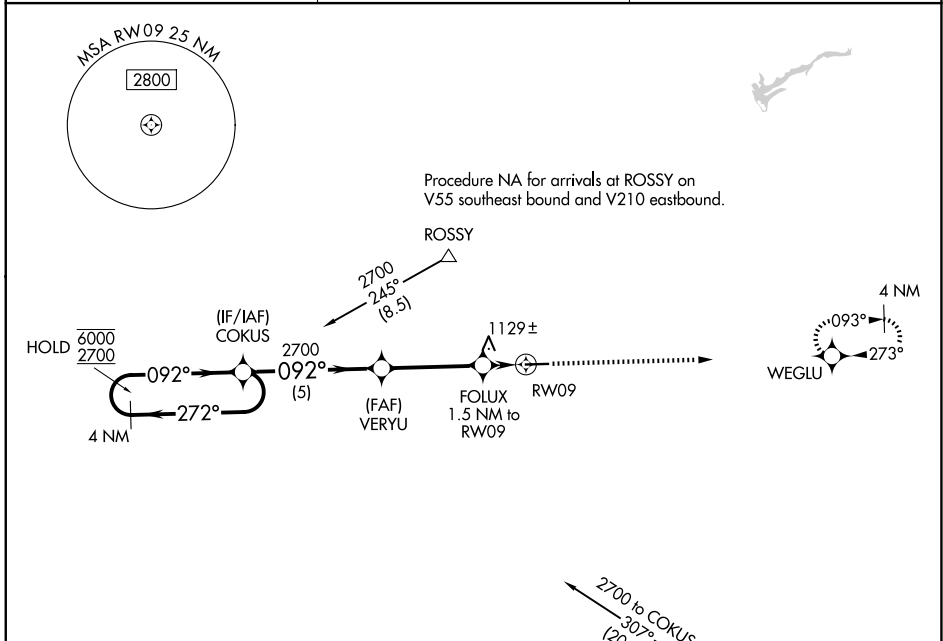
WAAS CH <b>77642</b> <b>W09A</b>	APP CRS <b>092°</b>	Rwy Ldg <b>4802</b> TDZE <b>1007</b> Apt Elev <b>1007</b>
--	------------------------	---

# RNAV (GPS) RWY 9

DARKE COUNTY (VES)

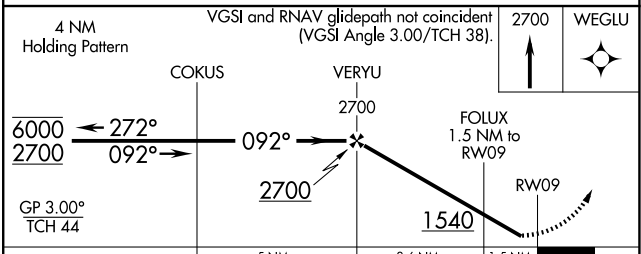
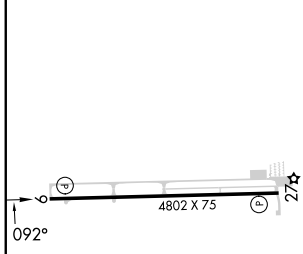
RNP APCH - GPS.	<p><b>▼</b> Rwy 9 helicopter visibility reduction below <math>\frac{3}{4}</math> SM NA. Circling Rwy 27 NA at night. <b>▲</b> For uncompensated Baro-VNAV systems, LNAV/VNAV NA below -16° C or above 54° C.</p>	MISSED APPROACH: Climb to 2700 direct WEGLU and hold.
-----------------	--	---

AWOS-3PT <b>125.9</b>	COLUMBUS APP CON <b>134.45 352.05</b>	UNICOM <b>122.8 (CTAF) 0</b>
--------------------------	--	---------------------------------



ELEV 1007	TDZE 1007
-----------	-----------

Procedure NA for arrival on DQN  
VOR/DME airway radials 264 CW 008. **DAYTON DQN**



CATEGORY	A	B	C	D
LPV DA	1257-1 250 (300-1)			NA
LNAV/VNAV DA	1400-1 $\frac{1}{8}$ 393 (400-1 $\frac{1}{8}$ )			NA
LNAV MDA	1400-1	393 (400-1)	1400-1 $\frac{1}{8}$ 393 (400-1 $\frac{1}{8}$ )	NA
CIRCLING	1440-1 433 (500-1)	1480-1 473 (500-1)	1660-1 $\frac{3}{4}$ 653 (700-1 $\frac{3}{4}$ )	NA

REIL Rwy 9 and 27 **0**  
MIRL Rwy 9-27 **0**

EC-2, 11 JUN 2026 to 09 JUL 2026

EC-2, 11 JUN 2026 to 09 JUL 2026