

WAAS CH 77610 W16A	APP CRS 165°	Rwy Idg TDZE Apt Elev	5000 885 885
--	------------------------	-----------------------------	---

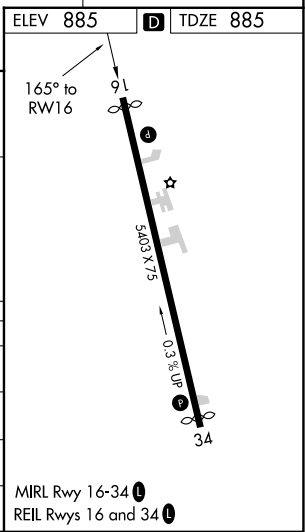
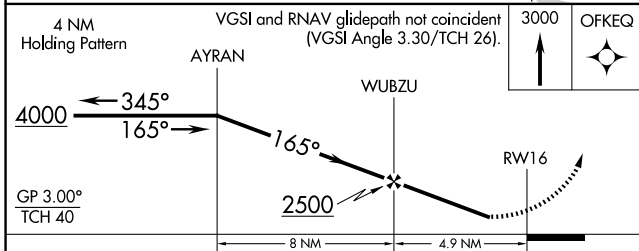
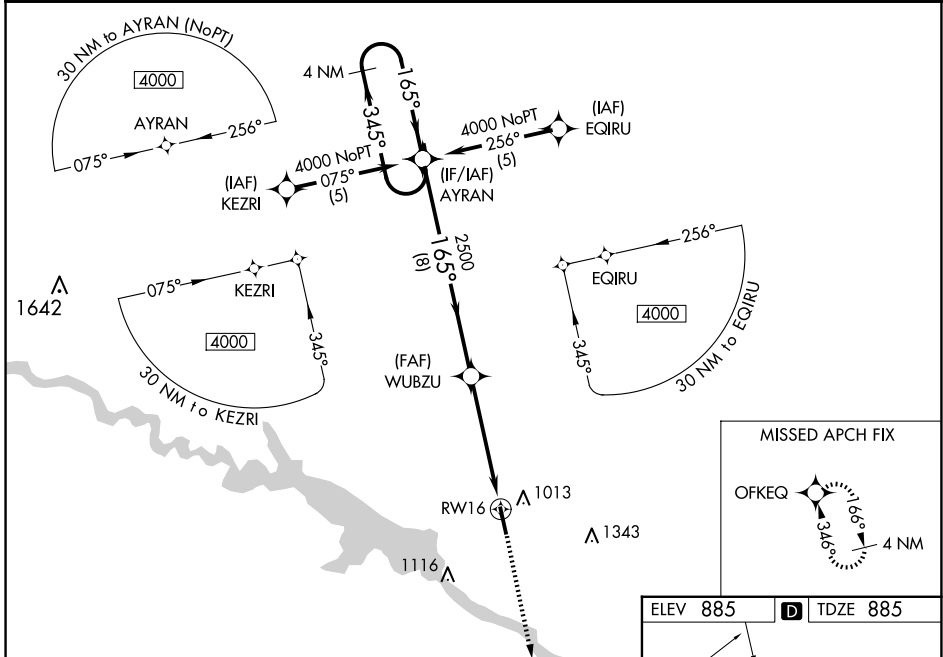
RNAV (GPS) RWY 16

PELLA MUNI (PEA)

⚠ DME/DME RNP -0.3 NA. Visibility reduction by helicopters NA. Baro-VNAV NA when using Knoxville altimeter setting. For uncompensated Baro-VNAV systems, LNAV/VNAV NA below -16°C (4°F) or above 54°C (130°F). When local altimeter setting not received, use Knoxville altimeter setting: increase LPV DA to 1261 feet; increase LNAV/VNAV DA to 1317 feet; increase all MDAs 40 feet and Circling visibility Cat C ¼ SM.

MISSED APPROACH: Climb to 3000 direct OFKEQ and hold.

AWOS-3 118.875	DES MOINES APP CON 123.9 307.15	UNICOM 122.8 (CTAF)
--------------------------	---	-------------------------------



CATEGORY	A	B	C	D
LPV DA	1232-1¼	347 (400-1¼)		NA
LNAV/VNAV DA	1288-1½	403 (500-1½)		NA
LNAV MDA	1360-1	475 (500-1)	1360-1¼ 475 (500-1¼)	NA
CIRCLING	1380-1 495 (500-1)	1420-1 535 (600-1)	1480-1½ 595 (600-1½)	NA

NC-3, 11 JUN 2026 to 09 JUL 2026

NC-3, 11 JUN 2026 to 09 JUL 2026