

APP CRS	Rwy Idg	<b>4887</b>
<b>175°</b>	TDZE	<b>707</b>
	Apt Elev	<b>719</b>

# RNAV (GPS) RWY 17

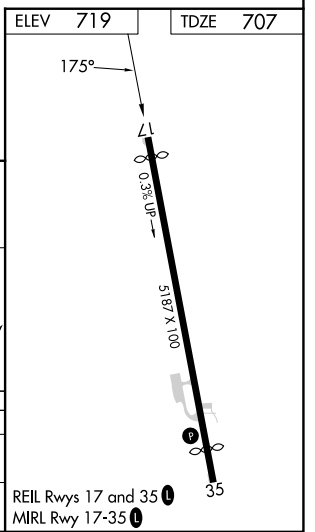
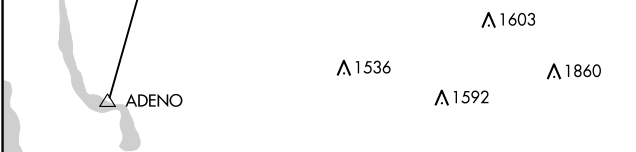
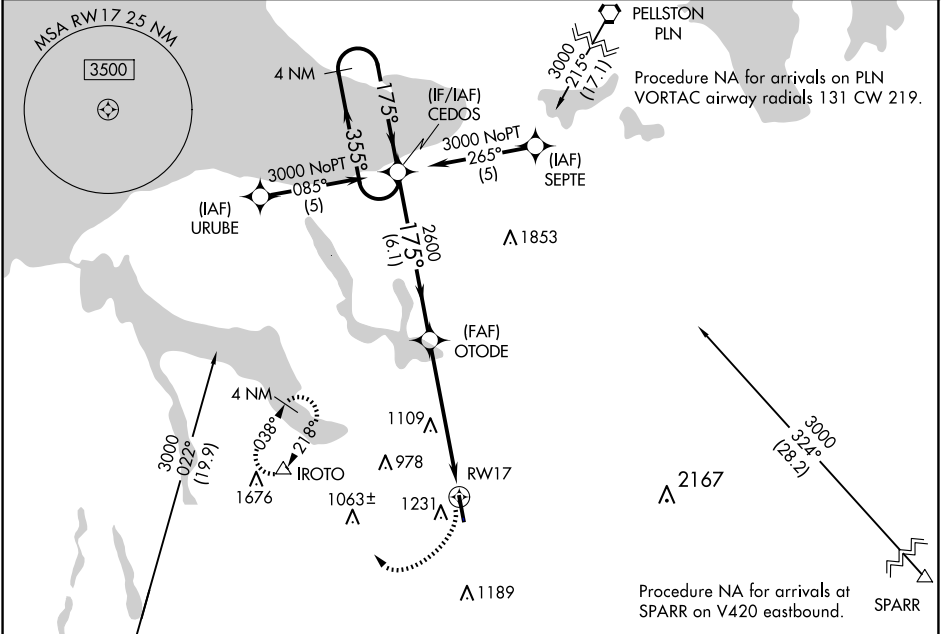
BOYNE MOUNTAIN (BFA)

RNP APCH - GPS.

**NA** Circling NA west of Rwy 17-35. Rwy 17 helicopter visibility reduction below 1 SM NA. Procedure NA at night. When local altimeter setting not received, use Belleaire altimeter setting. VDP NA when using Belleaire altimeter setting.

**MISSED APPROACH:** Climbing right turn to 3000 direct IROTO and hold.

AWOS-3PT <b>118.675</b>	MINNEAPOLIS CENTER <b>134.6 354.05</b>	UNICOM <b>122.8 (CTAF) 0</b>
----------------------------	---	---------------------------------



CATEGORY	A	B	C	D
LNAV MDA	1580 - 1 873 (900-1)	1580 - 1¼ 873 (900-1¼)	1580 - 2½ 873 (900-2½)	1580 - 2¾ 873 (900-2¾)
CIRCLING	1580 - 1¼ 861 (900-1¼)	1760 - 3 1041 (1100-3)	1880 - 3 1161 (1200-3)	

EC-1, 11 JUN 2026 to 09 JUL 2026

EC-1, 11 JUN 2026 to 09 JUL 2026