

WAAS CH <b>93934</b> <b>W02A</b>	APP CRS <b>021°</b>	Rwy Ldg TDZE <b>718</b> Apt Elev <b>718</b>	<b>5001</b>
----------------------------------------	------------------------	---------------------------------------------------	-------------

# RNAV (GPS) RWY 2

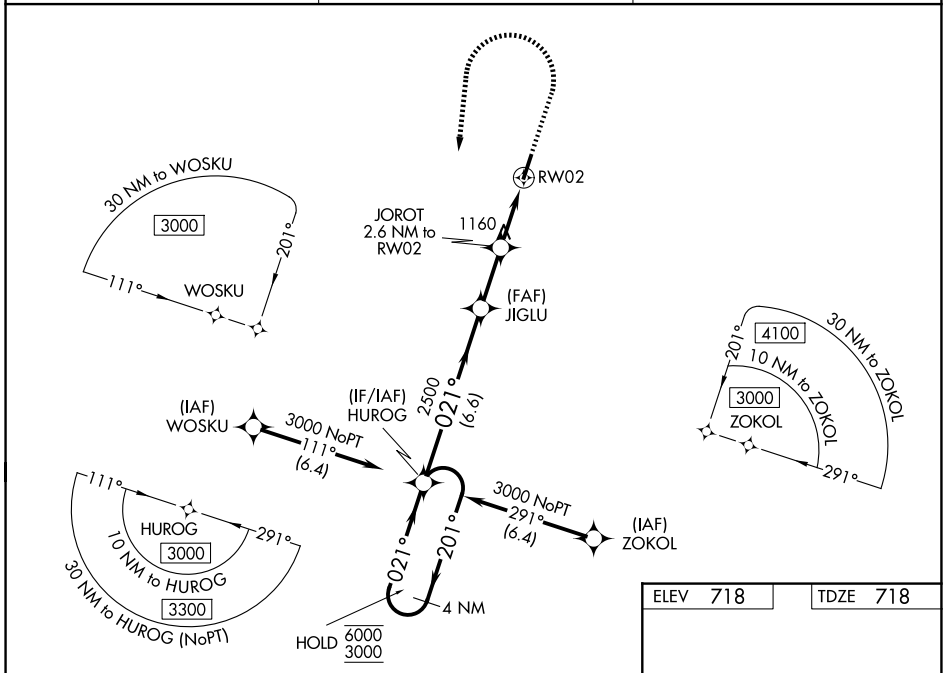
ELLINGTON (LUG)

RNP APCH - GPS.

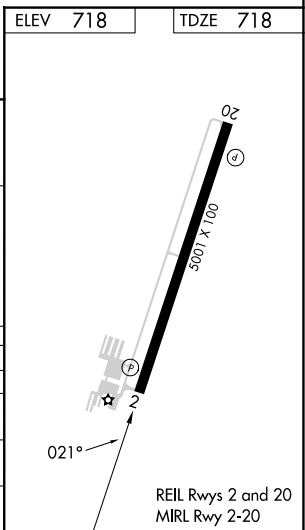
Baro-VNAV and VDP NA when using BNA altimeter setting. Circling Rwy 20 NA at night. Rwy 2 helicopter visibility reduction below 3/4 SM NA. When local altimeter setting not received, use BNA altimeter setting and increase LPV DA to 1096 feet and all visibilities 1/8 SM. Increase LNAV/VNAV DA to 1531 feet and all visibilities 1/2 SM. Increase all MDAs 120 feet and LNAV visibility Cat B 1/4 SM, Cats C and D 1/2 SM, Circling visibility Cats A and B 1/4 SM and Cat C 1/2 SM. For uncompensated Baro-VNAV systems, LNAV/VNAV NA below -16°C or above 54°C.

**MISSED APPROACH:**  
Climb to 1300 then climbing left turn to 3000 direct HUOG and hold.

AWOS-3 <b>135.775</b>	MEMPHIS CENTER <b>128.15 323.125</b>	UNICOM <b>122.8 (CTAF)</b>
--------------------------	-----------------------------------------	-------------------------------



4 NM Holding Pattern		HUOG		1300	3000	HUOG
6000 ← 201°		→ 021°		JIGLU 2500		
3000		2500		JROT 2.6 NM to RWY 2		
GP 3.30° TCH 55		1700		1.8 NM to RWY 2		
		6.6 NM		2.3 NM		0.8 NM
						1.8 NM
CATEGORY	A	B	C	D		
LPV DA	993-7/8	275 (300-7/8)		NA		
LNAV/VNAV DA	1428-2	710 (800-2)		NA		
LNAV MDA	1420-1	702 (800-1)	1420-2	702 (800-2)		
CIRCLING	1420-1 702 (800-1)	1480-1 762 (800-1)	1540-2 1/2 822 (900-2 1/2)	1640-3 922 (1000-3)		



SE-1, 11 JUN 2026 to 09 JUL 2026

SE-1, 11 JUN 2026 to 09 JUL 2026