

WAAS CH 77929 W11A	APP CRS 111°	Rwy Idg TDZE Apt Elev	5091 1988 1989
--	------------------------	-----------------------------	---

RNAV (GPS) RWY 11

L M CLAYTON (OLF')

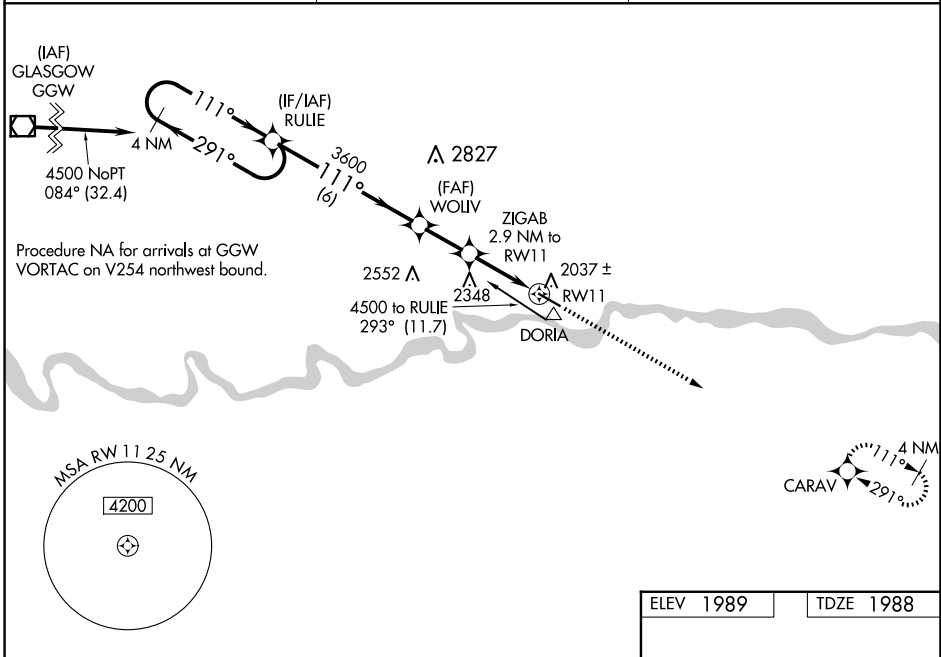
⚠ For uncompensated Baro-VNAV systems, LNAV/VNAV NA below -18°C (0°F) or above 54°C (130°F). DME/DME RNP-0.3 NA. When local altimeter setting not received, use Wokal FLD/Glasgow-Valley County altimeter setting; increase LPV DA to 2329 ft and visibility 3/8 SM, LNAV/VNAV DA to 2407 ft and visibility 1/2 SM; increase all MDA 160 feet and LNAV and Circling visibility Cat C/D 1/2 SM. Baro-VNAV and VDP NA with Glasgow altimeter setting.

MISSED APPROACH:
Climb to 4800 direct CARAV and hold.

ASOS
118.325

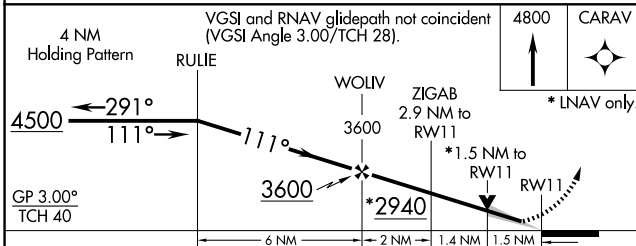
SALT LAKE CENTER
126.85 305.2

UNICOM
122.8 (CTAF) 0



NW-1, 11 JUN 2026 to 09 JUL 2026

NW-1, 11 JUN 2026 to 09 JUL 2026



CATEGORY	A	B	C	D
LPV DA		2188-3/4	200 (200-3/4)	
LNAV/VNAV DA		2266-7/8	278 (300-7/8)	
LNAV MDA	2500-1	512 (600-1)	2500-1 3/8	512 (600-1 3/8)
CIRCLING	2500-1	511 (600-1)	2660-2 671 (700-2)	2780-2 1/2 791 (800-2 1/2)

