

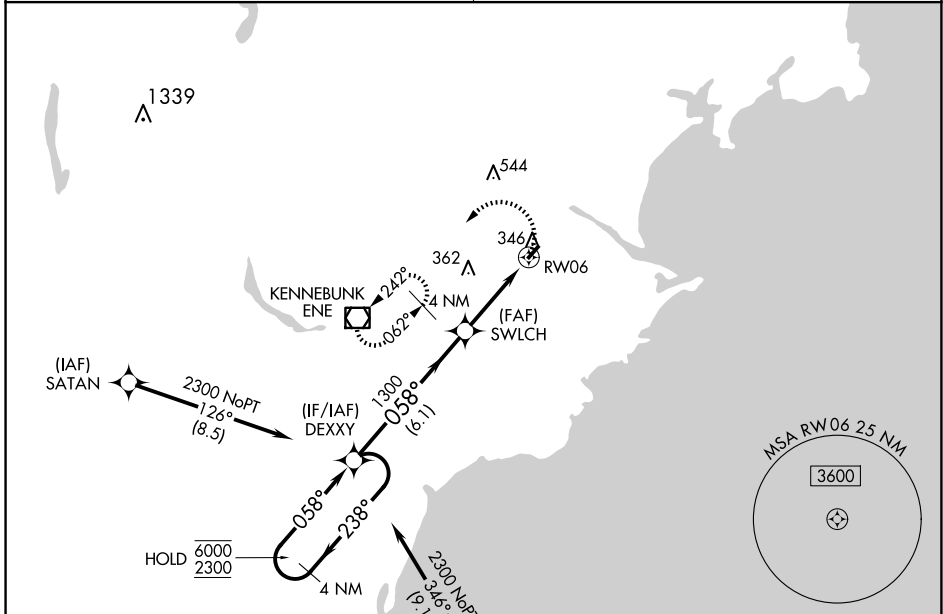
APP CRS	Rwy Idg	<b>3000</b>
<b>058°</b>	TDZE	<b>157</b>
	Apt Elev	<b>157</b>

# RNAV (GPS) RWY 6

BIDDEFORD MUNI (B19)

RNP APCH.		MISSED APPROACH: Climbing left turn to 3000 direct ENE VOR/DME and hold, continue climb-in-hold to 3000.
<p><b>▽</b> Rwy 6 helicopter visibility reduction below 3/4 SM NA. Obtain local altimeter setting on CTAF; when not received use Sanford altimeter setting and increase all MDA 40 feet and LNAV visibility Cat C 1/8 SM, and Circling visibility Cat C 1/4 SM. VDP NA when using Sanford altimeter setting. Circling Rwy 24 NA at night.</p> <p><b>△</b> NA</p>		

<p>PORTLAND APP CON ★</p> <p><b>119.75 269.35</b></p>	<p>UNICOM</p> <p><b>123.0 (CTAF) 1</b></p>
-------------------------------------------------------	--------------------------------------------



NE-1, 11 JUN 2026 to 09 JUL 2026

