

APP CRS	Rwy Idg	<b>5001</b>
<b>079°</b>	TDZE	<b>350</b>
	Apt Elev	<b>355</b>

# RNAV (GPS) RWY 8

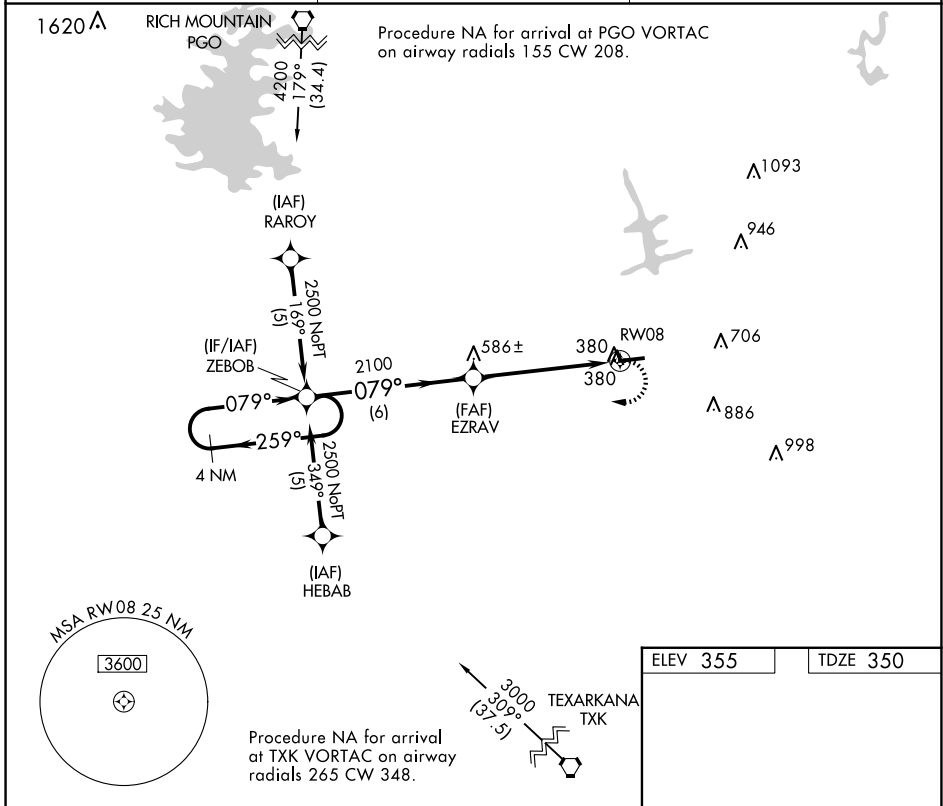
J LYNN HELMS SEVIER COUNTY (DEQ)

RNP APCH-GPS.

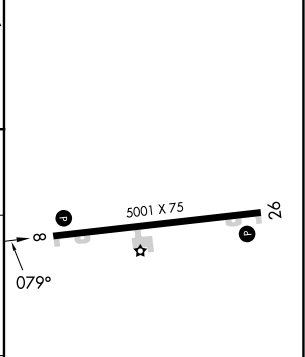
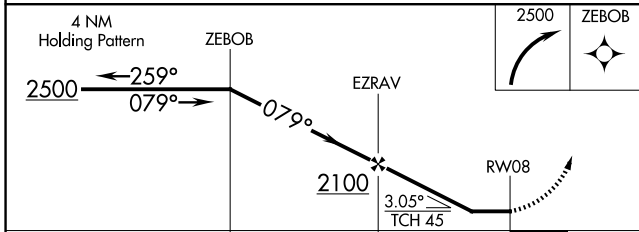
⚠ When local altimeter setting not received, use TXK altimeter and increase all MDAs 100 feet. Rwy 8 helicopter visibility reduction below  $\frac{3}{4}$  SM NA. Circling Rwy 26 NA at night.

MISSED APPROACH: Climbing right turn to 2500 direct ZEBOB and hold.

ASOS <b>134.075</b>	FORT WORTH CENTER <b>123.925 269.475</b>	UNICOM <b>122.8 (CTAF) 0</b>
------------------------	---	---------------------------------



ELEV 355	TDZE 350
----------	----------



CATEGORY	A	B	C	D
LNVA MDA	780-1	430 (500-1)		NA
CIRCLING	900-1 545 (600-1)	920-1 565 (600-1)		NA

REIL Rwy 8 and 26 0

MIRL Rwy 8-26 0

SC-1, 11 JUN 2026 to 09 JUL 2026

SC-1, 11 JUN 2026 to 09 JUL 2026