

RNAV (GPS) RWY 14

EDWARDS COUNTY (ECU)

APP CRS 138°	Rwy Ldg 3772
	TDZE 2372
	Apt Elev 2372

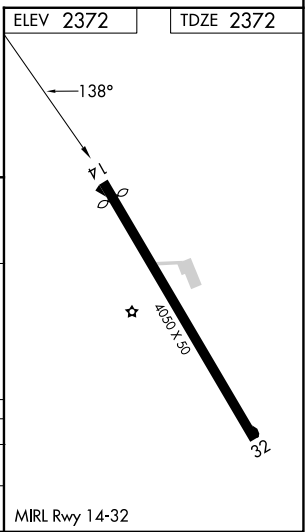
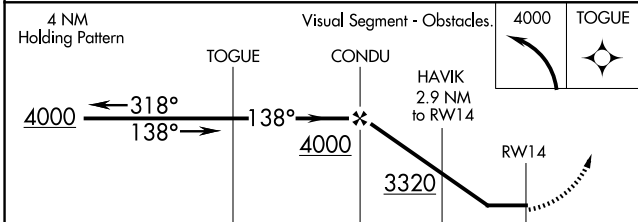
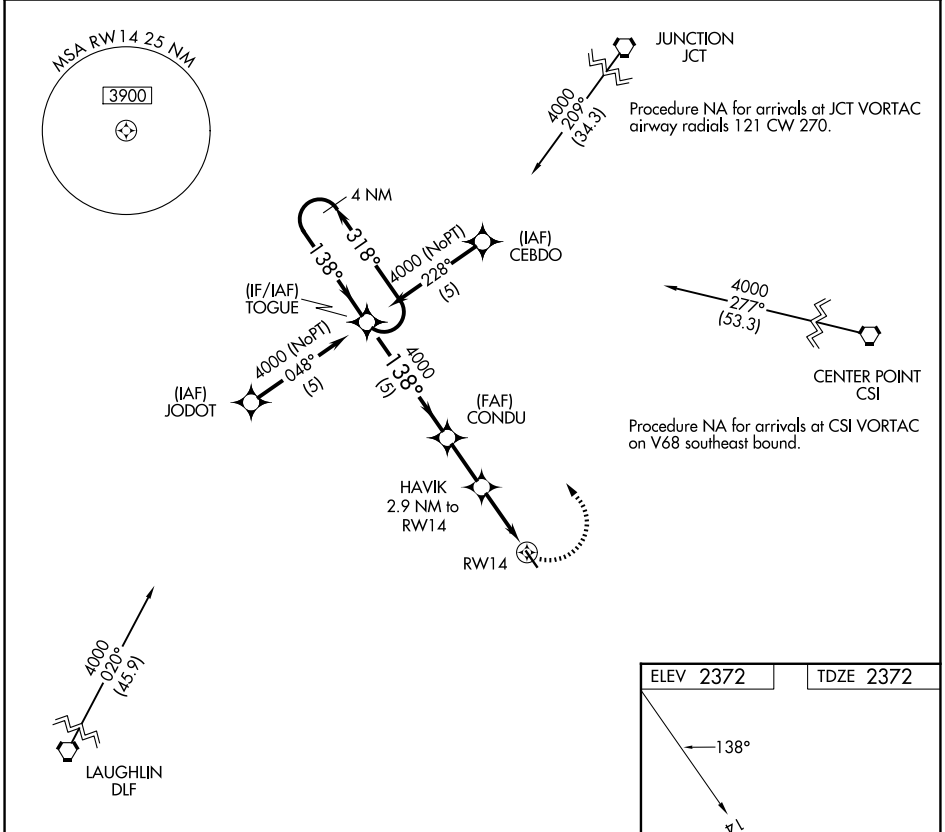
▼ DME/DME RNP-0.3 NA.
▲ NA Procedure NA at night.
 Helicopter visibility reduction below 1 SM NA.

MISSED APPROACH: Climbing left turn to 4000 direct TOGUE and hold.

AWOS-3
118.175

DEL RIO APP CON ★
119.6 259.1

CTAF
122.9



CATEGORY	A	B	C	D
LNVA MDA	2960-1	588 (600-1)	2960-1½ 588 (600-1½)	NA
CIRCLING	3000-1	628 (700-1)	3000-1¾ 628 (700-1¾)	NA

SC-3, 11 JUN 2026 to 09 JUL 2026

SC-3, 11 JUN 2026 to 09 JUL 2026