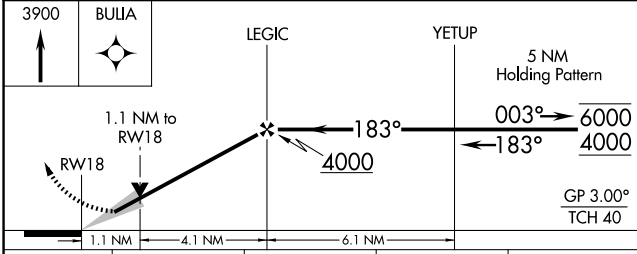
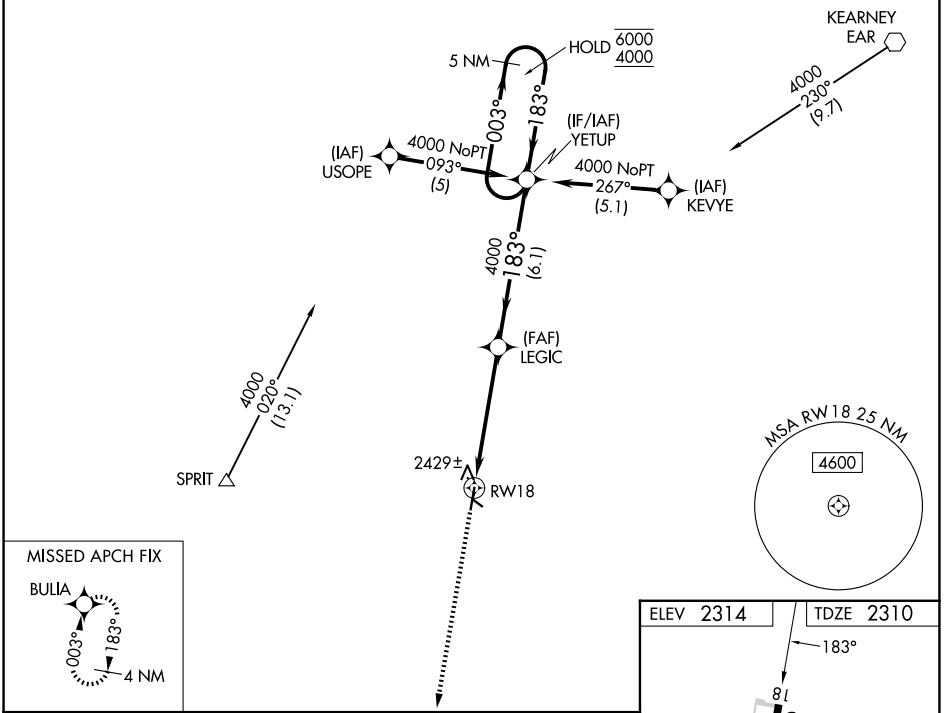


WAAS CH 73002 W18A	APP CRS 183°	Rwy Ldg TDZE Apt Elev	4701 2310 2314
--	------------------------	-----------------------------	---

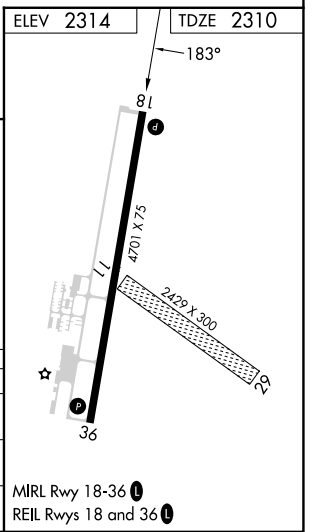
RNAV (GPS) RWY 18

BREWSTER FLD (HDE)

RNP APCH - GPS.		MISSED APPROACH: Climb to 3900 direct BULIA and hold.
<p>⚠ Circling NA to Rwy 11 and 29. VDP NA when using EAR altimeter setting. ⚠ When local altimeter setting not received, use EAR altimeter setting and increase LPV DA to 2637 feet and all visibilities ¼ SM. Increase all MDAs 80 feet and LNAV visibility Cat C/D ⅜ SM, and Circling visibility Cat C/D ¼ SM.</p>		
AWOS-3 121.325	DENVER CENTER 132.7 226.675	UNICOM 122.8 (CTAF) 0



CATEGORY	A	B	C	D
LPV DA		2560-1	250 (300-1)	
LNAV MDA		2680-1	370 (400-1)	
CIRCLING	2840-1	2880-1	3020-2	3020-2¼
	526 (600-1)	566 (600-1)	706 (800-2)	706 (800-2¼)



NC-2, 11 JUN 2026 to 09 JUL 2026

NC-2, 11 JUN 2026 to 09 JUL 2026