

APP CRS	Rwy Ldg	<b>4346</b>
<b>008°</b>	TDZE	<b>678</b>
	Apt Elev	<b>685</b>

# RNAV (GPS) RWY 1

PICKAWAY COUNTY MEML (C'YO)

RNP APCH.

**▲** Use Chillicothe altimeter setting, when not received use Rickenbacker Intl altimeter setting and increase all MDAs 60 feet, and Cats C and D visibility ¼ SM. Rwy 1 helicopter visibility reduction below 1 SM NA. Straight-In and Circling Rwy 1 NA at night.

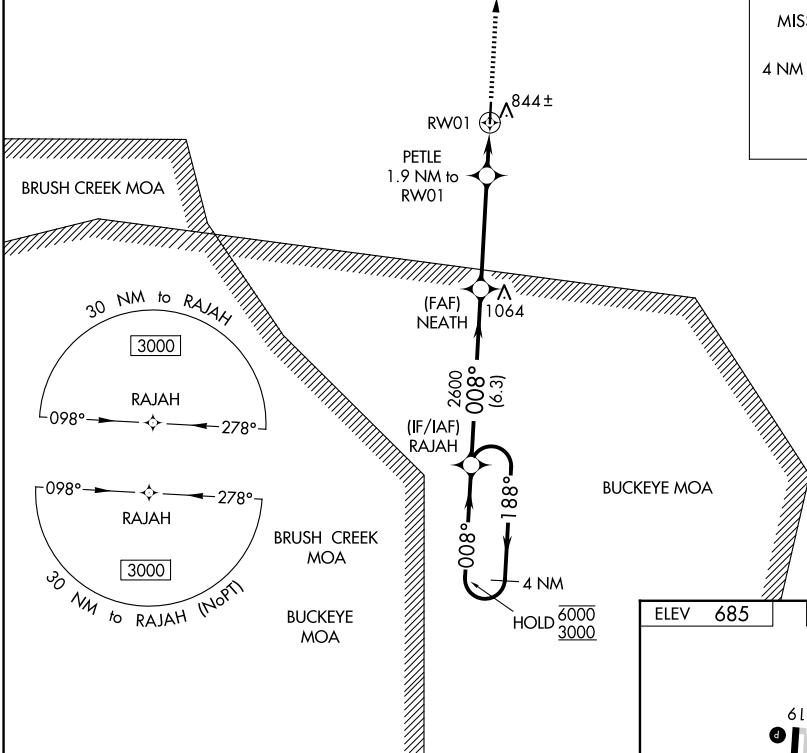
**MISSED APPROACH:**  
Climb to 3000 direct WAVUX and hold.

RZT AWOS-3  
**119.225**

COLUMBUS APP CON  
**134.0 279.6**

UNICOM  
**122.7 (CTAF) 0**

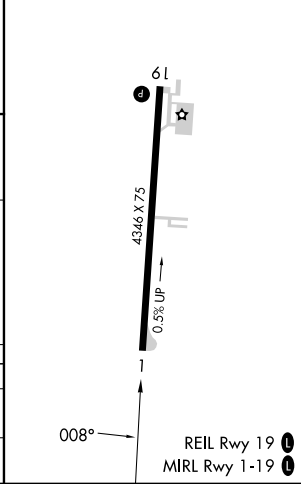
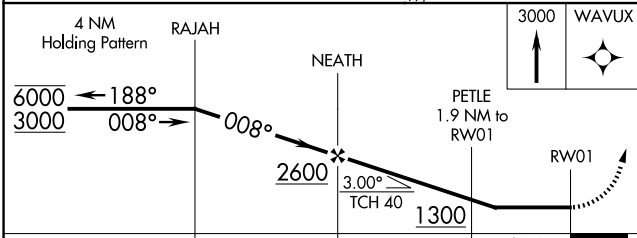
MISSED APCH FIX



EC-2, 11 JUN 2026 to 09 JUL 2026

EC-2, 11 JUN 2026 to 09 JUL 2026

ELEV	685	TDZE	678
------	-----	------	-----



CATEGORY	A	B	C	D
RNAV MDA	1100-1	422 (500-1)	1100-1 ¼	422 (500-1 ¼)
CIRCLING	1180-1 495 (500-1)	1200-1 515 (600-1)	1300-1 ¾ 615 (700-1 ¾)	1340-2 655 (700-2)