

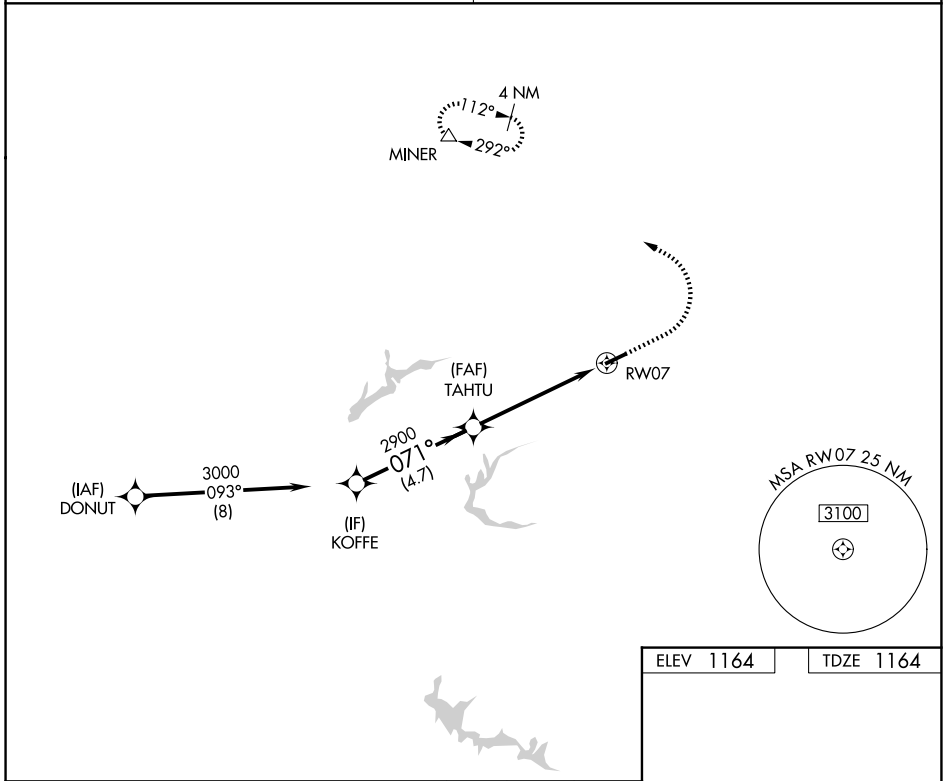
WAAS CH 62930 W07A	APP CRS 071°	Rwy Ldg TDZE Apt Elev	4300 1164 1164
--	------------------------	-----------------------------	---

RNAV (GPS) RWY 7

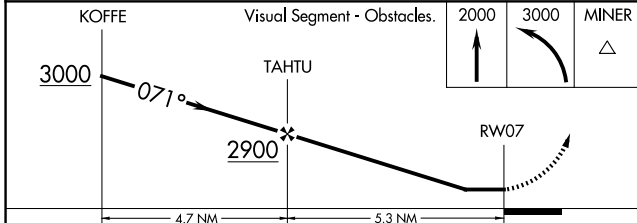
CARROLL COUNTY/TOLSON (T'SO)

RNP APCH.	Procedure NA at night. Use Akron-Canton Rgnl altimeter setting; when not received use New Philadelphia altimeter and increase all MDA 20 feet. Rwy 7 helicopter visibility reduction below 1 SM NA.	MISSED APPROACH: Climb to 2000 then climbing left turn to 3000 direct MINER and hold.
-----------	---	---

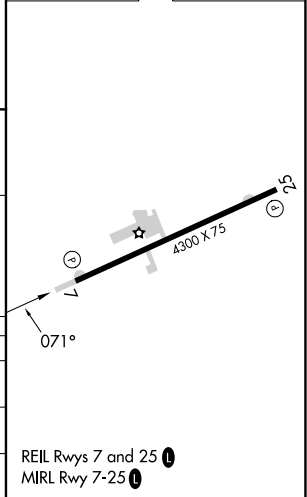
CLEVELAND APP CON★ 125.5 371.875	UNICOM 122.7 (CTAF) 0
--	---------------------------------



ELEV 1164	TDZE 1164
-----------	-----------



CATEGORY	4.7 NM		5.3 NM	
	A	B	C	D
LP MDA	1760-1	596 (600-1)	NA	
LNAV MDA	1820-1	656 (700-1)	NA	
CIRCLING	1840-1	676 (700-1)	NA	



EC-2, 11 JUN 2026 to 09 JUL 2026

EC-2, 11 JUN 2026 to 09 JUL 2026