

LOC I-SOZ <b>108.7</b>	APP CRS <b>246°</b>	Rwy Ldg TDZE <b>5002 2240</b>	Apt Elev <b>2275</b>
---------------------------	------------------------	----------------------------------	-------------------------

# LOC RWY 25

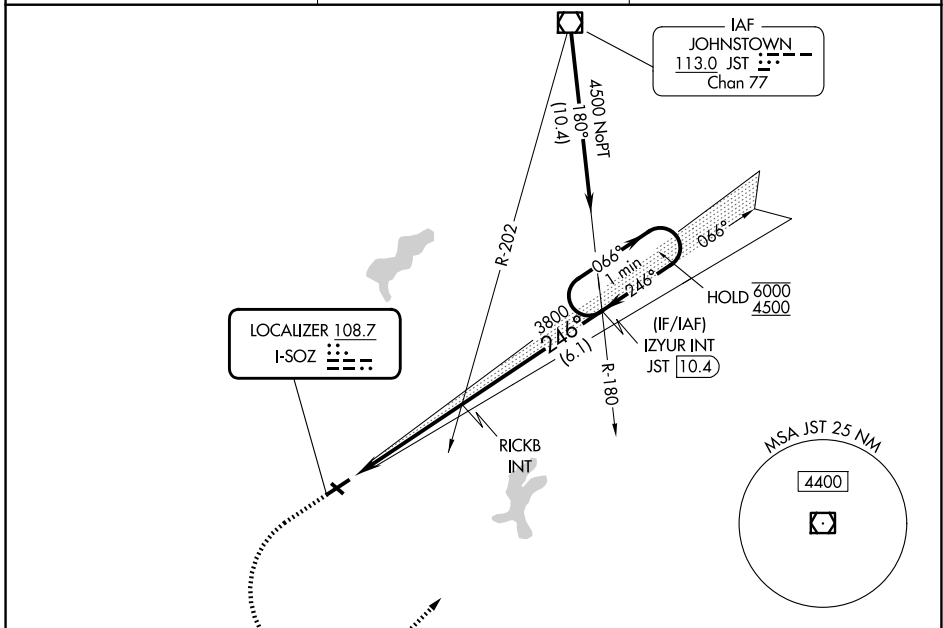
SOMERSET COUNTY (2G9)

DME required.

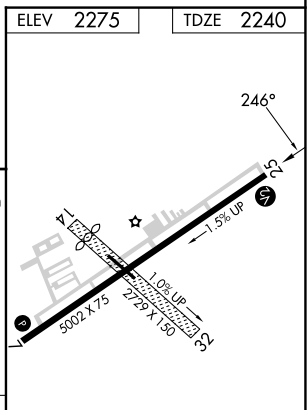
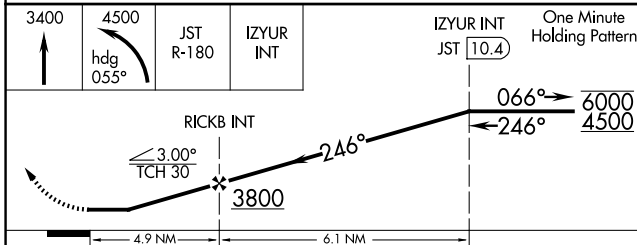
**▼** Rwy 25 helicopter visibility reduction below 1 SM NA.  
**▲** Circling NA to Rwys 14 and 32. Procedure NA at night.

MISSED APPROACH: Climb to 3400 then climbing left turn to 4500 on heading 055° and JST VOR/DME R-180 to IZYUR INT/JST 10.4 DME and hold.

AWOS-3P <b>133.8</b>	JOHNSTOWN APP CON ★ <b>121.2 299.2</b>	UNICOM <b>122.8 (CTAF)</b>
-------------------------	---	-------------------------------



ELEV 2275	TDZE 2240
-----------	-----------



CATEGORY	A	B	C	D
S-25	2860-1	620 (600-1)	2860-1¾	620 (600-1¾)
CIRCLING	2860-1 585 (600-1)	2920-1 645 (700-1)	3520-3	1245 (1300-3)

MIRL Rwy 7-25  
 REIL Rwys 7 and 25  
 FAF to MAP 4.9 NM

Knots	60	90	120	150	180
Min:Sec	4:54	3:16	2:27	1:58	1:38

NE-4, 11 JUN 2026 to 09 JUL 2026

NE-4, 11 JUN 2026 to 09 JUL 2026