

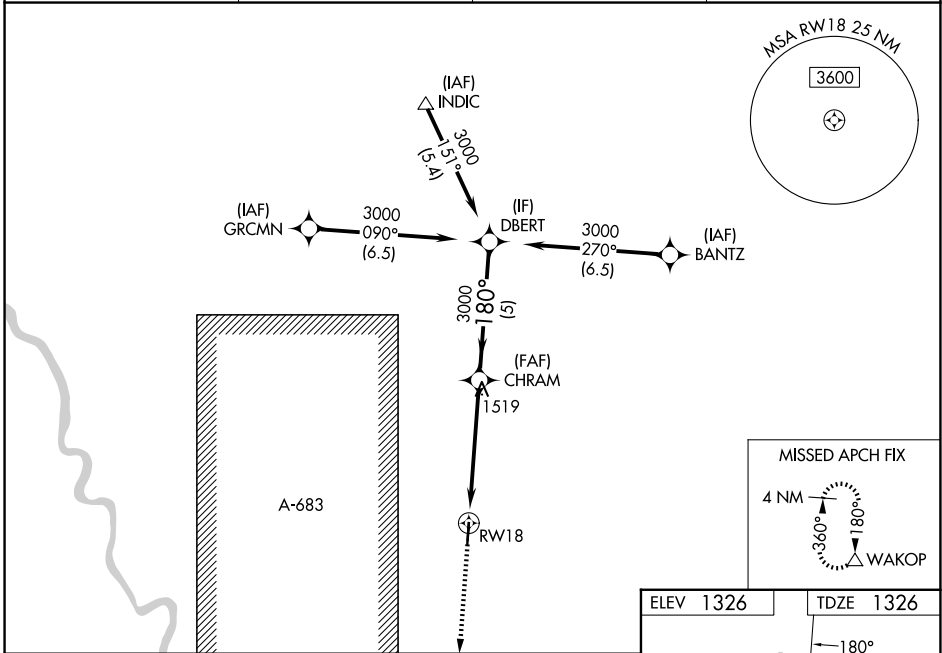
WAAS CH <b>70348</b> <b>W18A</b>	APP CRS <b>180°</b>	Rwy Ldg TDZE <b>1326</b> Apt Elev <b>1326</b>
--	------------------------	---

# RNAV (GPS) RWY 18

AUGUSTA MUNI (3AU)

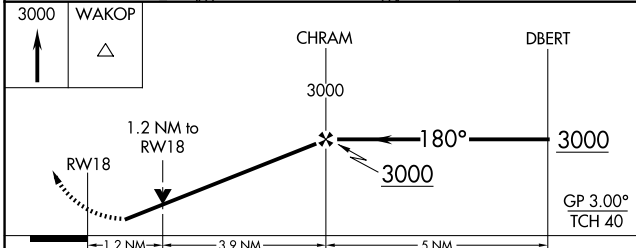
RNP APCH - GPS.	MISSED APPROACH: Climb to 3000 direct WAKOP and hold.
<p><b>▼</b> Rwy 18 helicopter visibility reduction below 3/4 SM NA. For uncompensated Baro-VNAV systems, LNAV/VNAV NA below -17°C or above 54°C. Baro-VNAV and VDP NA when using AAO altimeter setting. When local altimeter setting not received, use AAO altimeter setting and increase LPV DA to 1624 feet; increase LNAV/VNAV DA to 1742 feet; increase all MDAs 40 feet and LNAV visibility Cat C 1/8 SM.</p>	

AWOS-3P <b>124.175</b>	WICHITA APP CON <b>134.8 269.1</b>	CLNC DEL <b>125.0</b>	UNICOM <b>122.8 (CTAF) 0</b>
---------------------------	---------------------------------------	--------------------------	---------------------------------

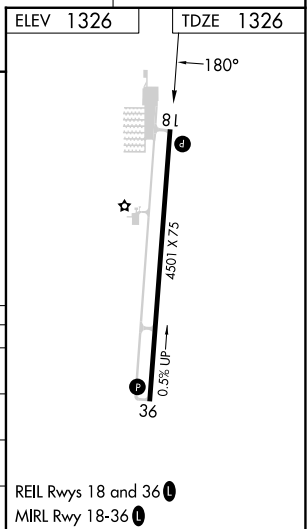


NC-2, 11 JUN 2026 to 09 JUL 2026

NC-2, 11 JUN 2026 to 09 JUL 2026



CATEGORY	A	B	C	D
LPV DA	1591-1	265 (300-1)		NA
LNAV/VNAV DA	1709-1 1/8	383 (400-1 1/8)		NA
LNAV MDA	1760-1	434 (500-1)	1760-1 1/4 434 (500-1 1/4)	NA
CIRCLING	1800-1 474 (500-1)	1820-1 494 (500-1)	1820-1 1/2 494 (500-1 1/2)	NA



REIL Rwy 18 and 36 0  
MIRL Rwy 18-36 0