

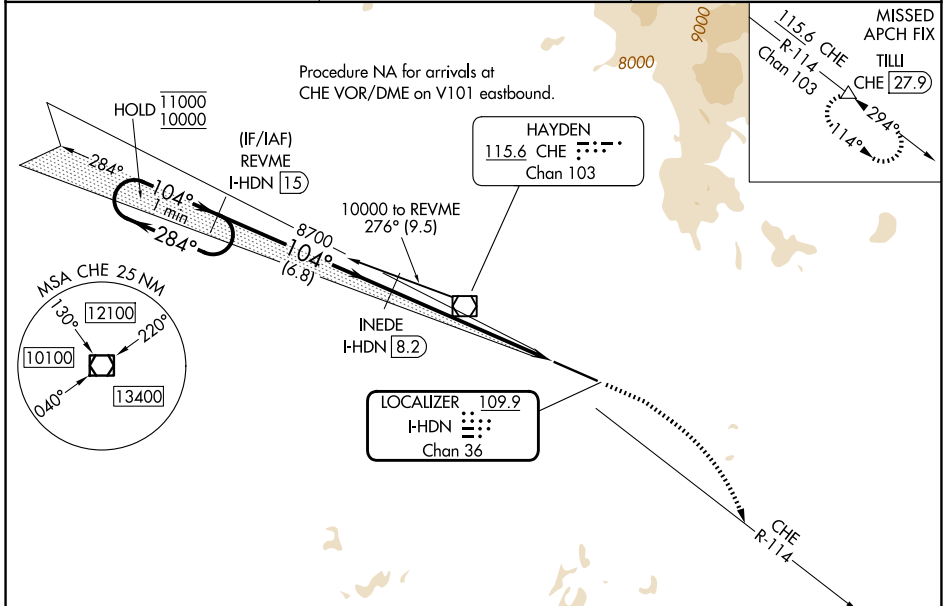
LOC/DME I-HDN 109.9 Chan 36	APP CRS 104°	Rwy Ldg TDZE Apt Elev	9490 6591 6606
-------------------------------------------------	------------------------	-----------------------------	-------------------------------------------

ILS or LOC RWY 10

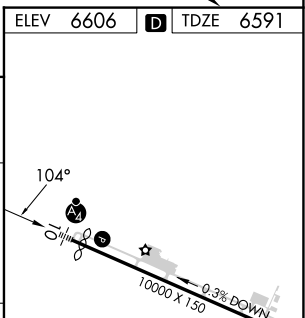
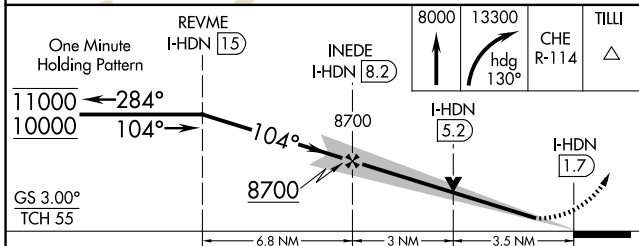
YAMPA VALLEY (HDN)

DME required.	MALSF	MISSED APPROACH: Climb to 8000 then climbing right turn to 13300 on heading 130° and on CHE VOR/DME R-114 to TILLI/CHE 27.9 DME and hold, continue climb-in-hold to 13300. *Missed approach requires minimum climb of 307 feet per NM to 8700.
Inop table does not apply to S-ILS 10* all Cats and S-LOC 10 Cats C/D. For inop ALS, increase S-ILS 10 all Cats visibility to 2½ SM.		

AWOS-3PT 119.275	DENVER CENTER 120.475 235.975	UNICOM 123.0 (CTAF)
----------------------------	-----------------------------------------	-------------------------------



ELEV 6606	TDZE 6591
-----------	-----------



CATEGORY	A	B	C	D
S-ILS 10*	6791-¾ 200 (200-¾)			
S-ILS 10	7414-2 823 (900-2)			
S-LOC 10	7760-1 1169 (1200-1)	7760-1¼ 1169 (1200-1¼)	7760-3 1169 (1200-3)	
CIRCLING	7760-1¼ 1154 (1200-1¼)	7760-1½ 1154 (1200-1½)	7900-3 1294 (1300-3)	8200-3 1594 (1600-3)

REIL Rwy 28	HIRL Rwy 10-28
-------------	----------------

SW-1, 11 JUN 2026 to 09 JUL 2026

SW-1, 11 JUN 2026 to 09 JUL 2026