

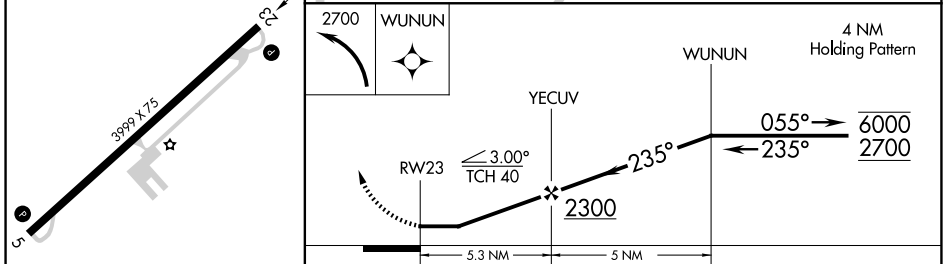
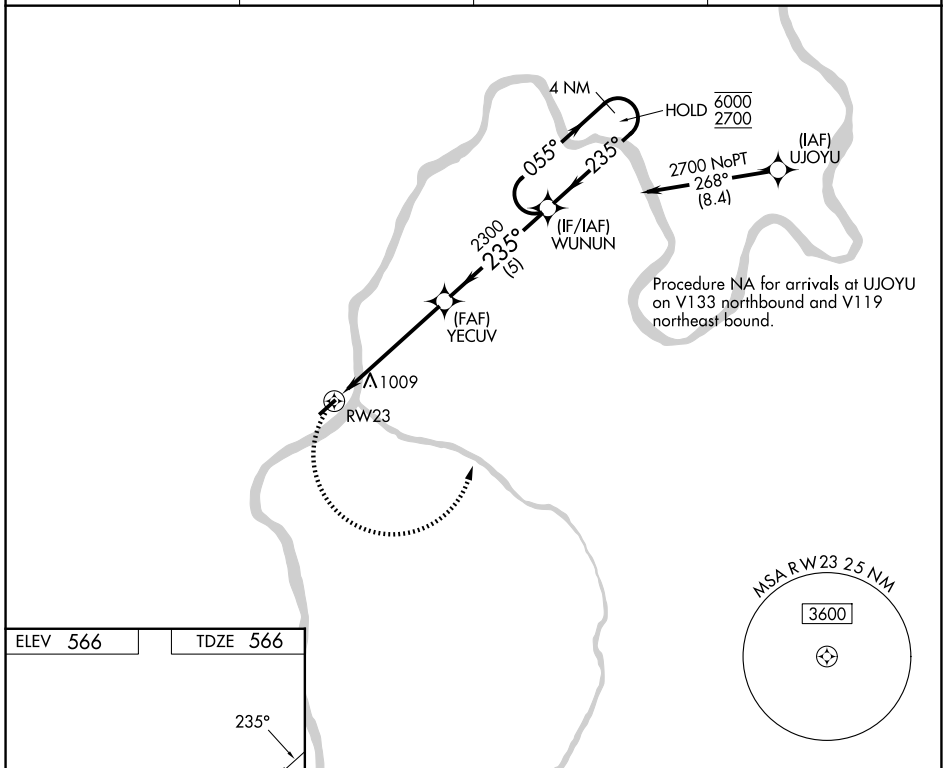
APP CRS <b>235°</b>	Rwy Ldg TDZE Apt Elev	<b>3999</b> <b>566</b> <b>566</b>
------------------------	-----------------------------	---

# RNAV (GPS) RWY 23

GALLIA-MEIGS RGNL (GAS)

RNP APCH - GPS.	MISSED APPROACH: Climbing left turn to 2700 direct WUNUN and hold.
NA Helicopter visibility reduction below 1 SM NA. Procedure NA at night.	

AWOS-3PT <b>119.925</b>	HUNTINGTON APP CON <b>128.4 270.1</b>	CLNC DEL <b>124.55</b>	UNICOM <b>123.0 (CTAF)</b>
----------------------------	--	---------------------------	-------------------------------



ELEV 566	TDZE 566			
MIRL Rwy 5-23	REIL Rwy 23			
3999 X 75				
235°				
2700 WUNUN	4 NM Holding Pattern			
WUNUN				
YECUV				
RWY 23				
3.00° TCH 40				
2300				
055°				
235°				
6000				
2700				
5.3 NM	5 NM			
CATEGORY	A	B	C	D
LNAV MDA	1320-1 754 (800-1)	1320-1¼ 754 (800-1¼)	1320-2 754 (800-2)	NA
CIRCLING	1440-1¼ 874 (900-1¼)		1440-2½ 874 (900-2½)	NA

EC-2, 11 JUN 2026 to 09 JUL 2026

EC-2, 11 JUN 2026 to 09 JUL 2026