

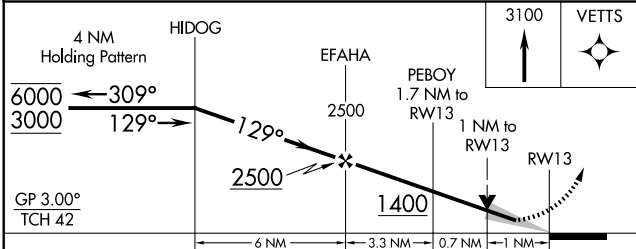
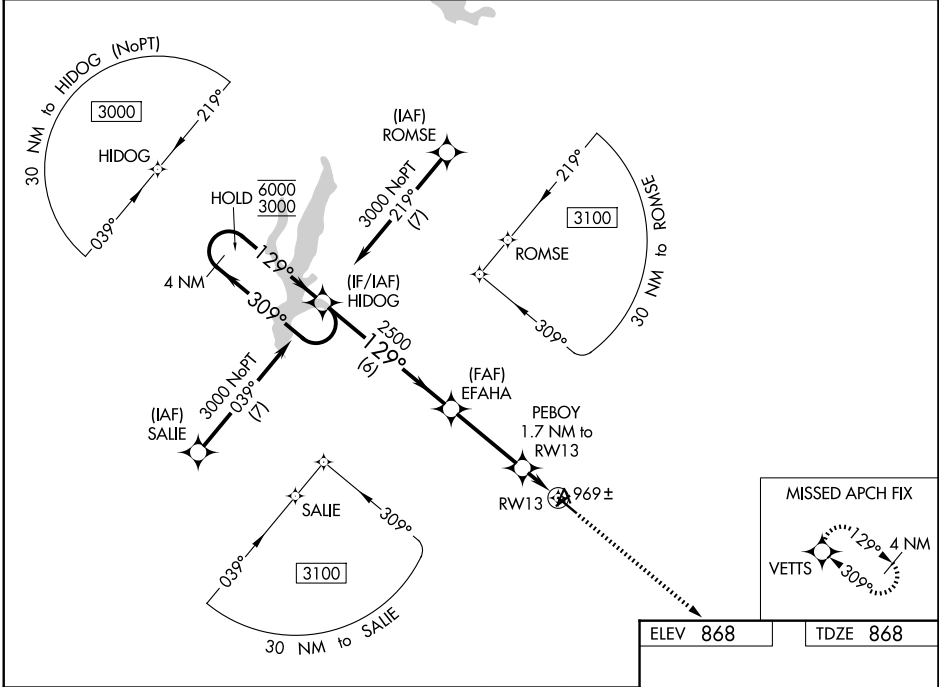
WAAS CH <b>56621</b> <b>W13A</b>	APP CRS <b>129°</b>	Rwy Ldg TDZE Apt Elev	<b>5000</b> <b>868</b> <b>868</b>
--	------------------------	-----------------------------	---

# RNAV (GPS) RWY 13

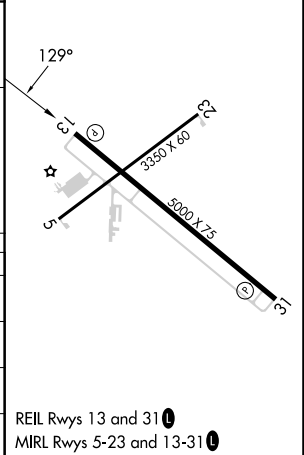
OMAR N BRADLEY (M<sup>B</sup>Y)

RNP APCH-GPS.	MISSED APPROACH: Climb to 3100 direct VETTS and hold.
<p>Circling to Rwy 5, 23, 31 NA at night. For uncompensated Baro-VNAV systems, LNAV/VNAV NA below -16°C or above 54°C.</p>	

AWOS-3PT <b>120.025</b>	KANSAS CITY CENTER <b>132.6 370.9</b>	UNICOM <b>122.7 (CTAF) 0</b>
----------------------------	--	---------------------------------



ELEV 868	TDZE 868
----------	----------



CATEGORY	A	B	C	D
LPV DA	1118-3/4	250 (300-3/4)		NA
LNAV/VNAV DA	1139-7/8	271 (300-7/8)		NA
LNAV MDA	1220-1	352 (400-1)		NA
CIRCLING	1380-1 512 (600-1)	1440-1 572 (600-1)	1520-1 1/4 652 (700-1 1/4)	NA

REIL Rwy 13 and 31  
MIRL Rwy 5-23 and 13-31

NC-3, 11 JUN 2026 to 09 JUL 2026

NC-3, 11 JUN 2026 to 09 JUL 2026