

WAAS CH 86827 W12A	APP CRS 120°	Rwy Idg TDZE Apt Elev	5596 1452 1456
--	------------------------	-----------------------------	---

RNAV (GPS) RWY 12

ELY MUNI (E.L.O)

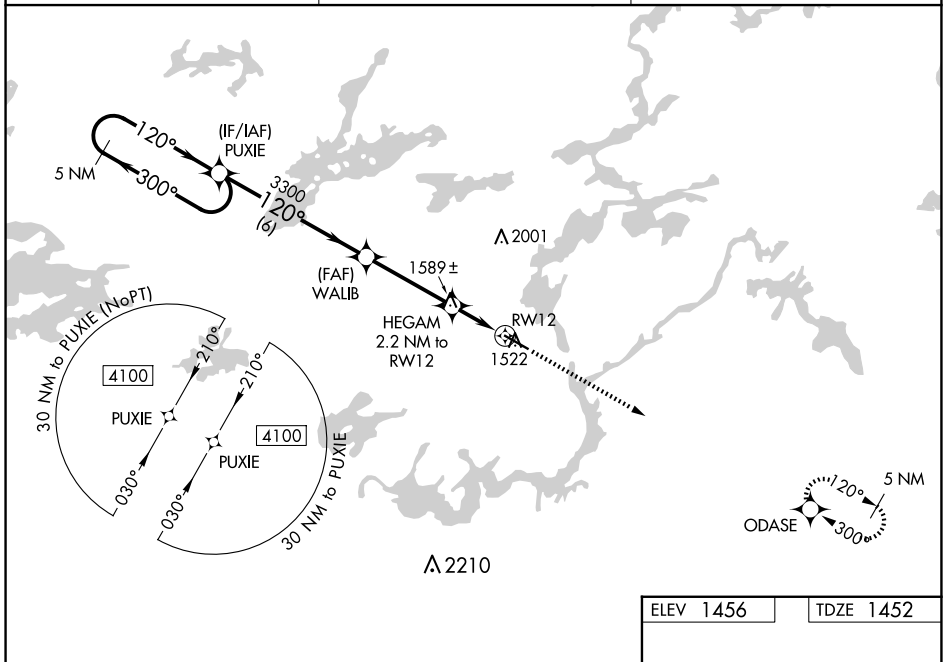
⚠ Baro-VNAV NA when using Cook altimeter setting. For uncompensated Baro-VNAV systems, LNAV/VNAV NA below -17°C (2°F) or above 34°C (93°F). DME/DME RNP-0.3 NA. VDP NA when using Cook altimeter setting. When local altimeter setting not received, use Cook altimeter setting and increase all DA/MDA 100 feet; increase LPV visibility ¼ mile all Cats, LNAV/VNAV visibility ⅓ mile all Cats, and LNAV Cat C and D visibility ¼ mile.

MISSED APPROACH: Climb to 4100 direct ODASE and hold.

AWOS-3PT
132.025

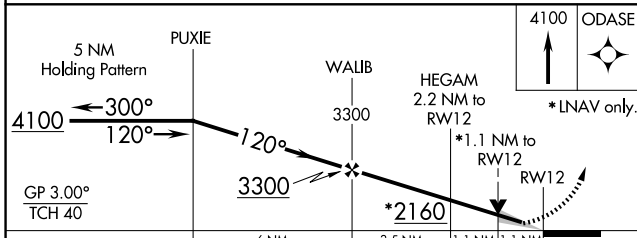
MINNEAPOLIS CENTER
127.9 281.45

UNICOM
122.8 (CTAF) ①



NC-1, 11 JUN 2026 to 09 JUL 2026

NC-1, 11 JUN 2026 to 09 JUL 2026



ELEV 1456	TDZE 1452
<p>MIRL Rwy 12-30 ① REIL Rwy 12 and 30 ①</p>	

CATEGORY	A	B	C	D
LPV DA		1652-1	200 (200-1)	
LNAV/VNAV DA		1726-1	274 (300-1)	
LNAV MDA	1840-1	388 (400-1)	1840-1 ⅛	388 (400-1 ⅛)
CIRCLING	1920-1 464 (500-1)	1940-1 484 (500-1)	1940-1 ½ 484 (500-1 ½)	2360-3 904 (1000-3)