

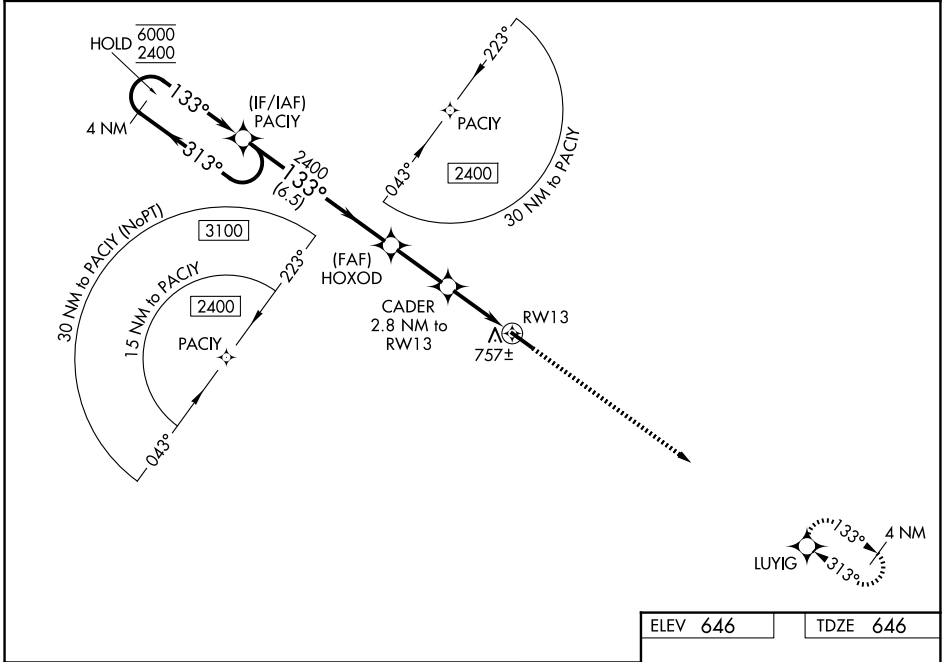
WAAS CH <b>62809</b> <b>W13A</b>	APP CRS <b>133°</b>	Rwy Ldg <b>5020</b> TDZE <b>646</b> Apt Elev <b>646</b>
----------------------------------------	------------------------	---------------------------------------------------------------

# RNAV (GPS) RWY 13

WASHINGTON/WILKES COUNTY (IIY)

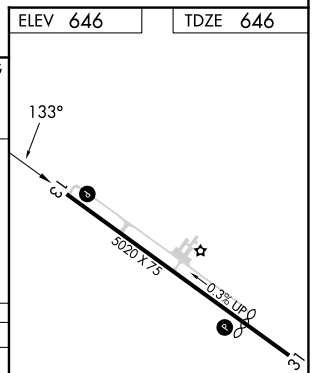
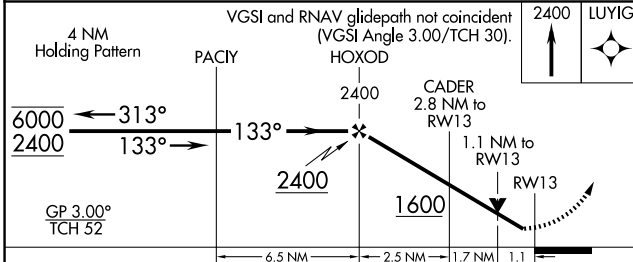
RNP APCH-GPS.	MISSED APPROACH: Climb to 2400 direct LUYIG and hold.
<p>Rwy 13 helicopter visibility reduction below 3/4 SM NA. For uncompensated Baro-VNAV systems, LNAV/VNAV NA below -16°C or above 54°C.</p>	

AWOS-3 <b>118.375</b>	AUGUSTA APP CON★ <b>126.8 270.3</b>	UNICOM <b>122.7 (CTAF) 0</b>
--------------------------	----------------------------------------	---------------------------------



SE-4, 11 JUN 2026 to 09 JUL 2026

SE-4, 11 JUN 2026 to 09 JUL 2026



CATEGORY	A	B	C	D
LPV DA	958-7/8	312 (400-7/8)		NA
LNAV/VNAV DA	907-7/8	261 (300-7/8)		NA
LNAV MDA	1020-1	374 (400-1)		NA
CIRCLING	1080-1 434 (500-1)	1100-1 454 (500-1)	1100-1 1/2 454 (500-1 1/2)	NA

ELEV 646 TDZE 646

MRL Rwy 13-31 0  
REIL Rws 13 and 31 0