

WAAS CH <b>69234</b> <b>W05A</b>	APP CRS <b>050°</b>	Rwy Ldg TDZE <b>17</b> Apt Elev <b>18</b>	<b>5000</b>
--	------------------------	---	-------------

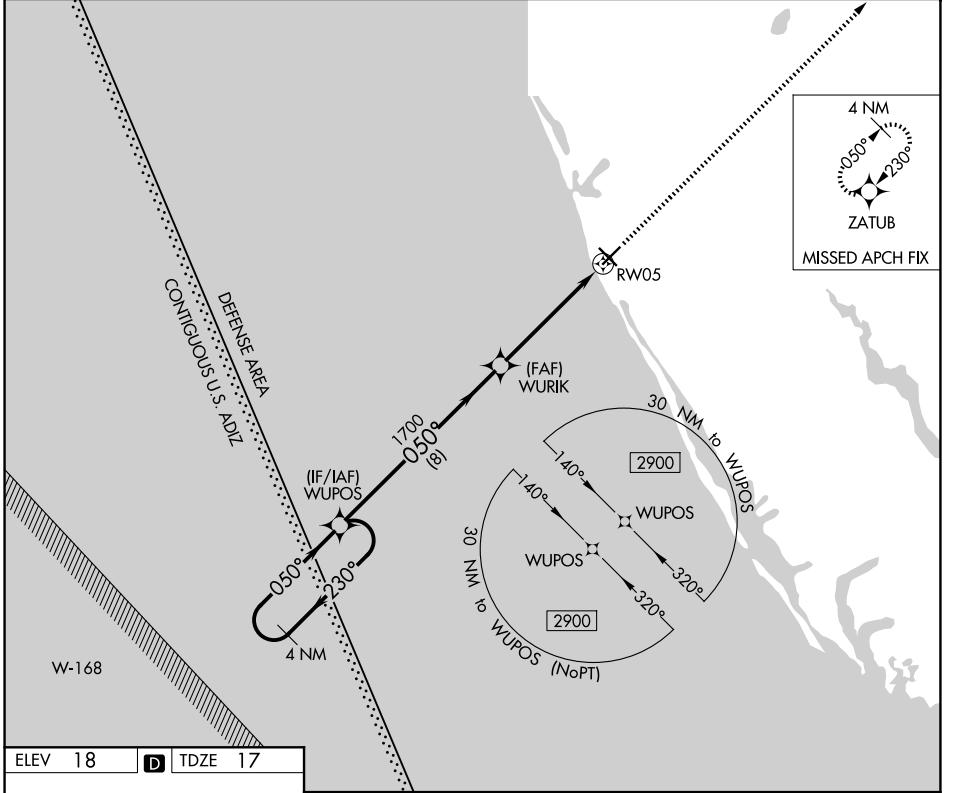
# RNAV (GPS) RWY 5

VENICE MUNI (VNC)

**▼** When local altimeter setting not received, use Sarasota altimeter setting and increase all MDA 60 feet, increase LNAV Cat C, D visibility  $\frac{1}{8}$  mile, and Circling Cat C visibility  $\frac{1}{4}$  mile. DME/DME RNP-0.3 NA.  
**▲** Helicopter visibility reduction below  $\frac{3}{4}$  SM NA.

MISSED APPROACH:  
Climb to 2900 direct ZATUB and hold.

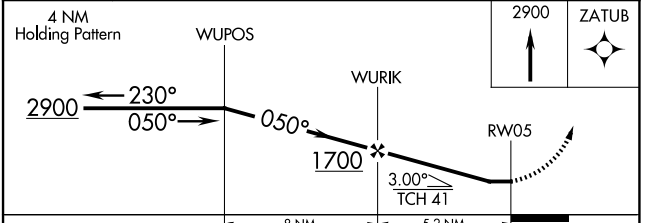
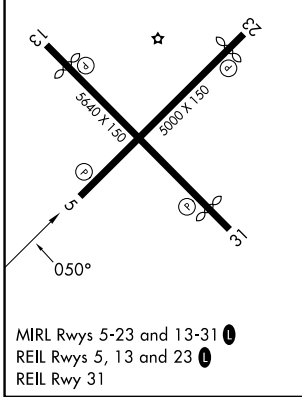
AWOS-3 <b>119,275</b>	TAMPA APP CON <b>119,65 353,575</b>	UNICOM <b>122,725 (CTAF) ①</b>
--------------------------	--	-----------------------------------



SE-3, 11 JUN 2026 to 09 JUL 2026

SE-3, 11 JUN 2026 to 09 JUL 2026

ELEV 18	<b>D</b>	TDZE 17
---------	----------	---------



CATEGORY	A	B	C	D
LP MDA	460-1	443 (500-1)	460- $\frac{1}{8}$	443 (500- $\frac{1}{8}$ )
LNAV MDA	480-1	463 (500-1)	480- $\frac{1}{8}$	463 (500- $\frac{1}{8}$ )
CIRCLING	500-1	482 (500-1)	700-2 682 (700-2)	920-3 902 (1000-3)