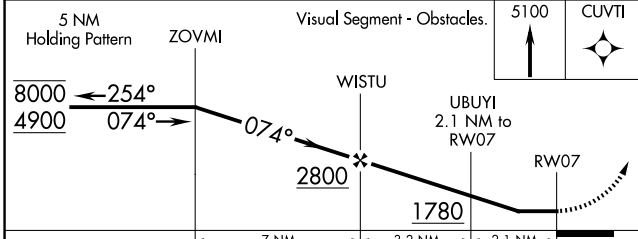
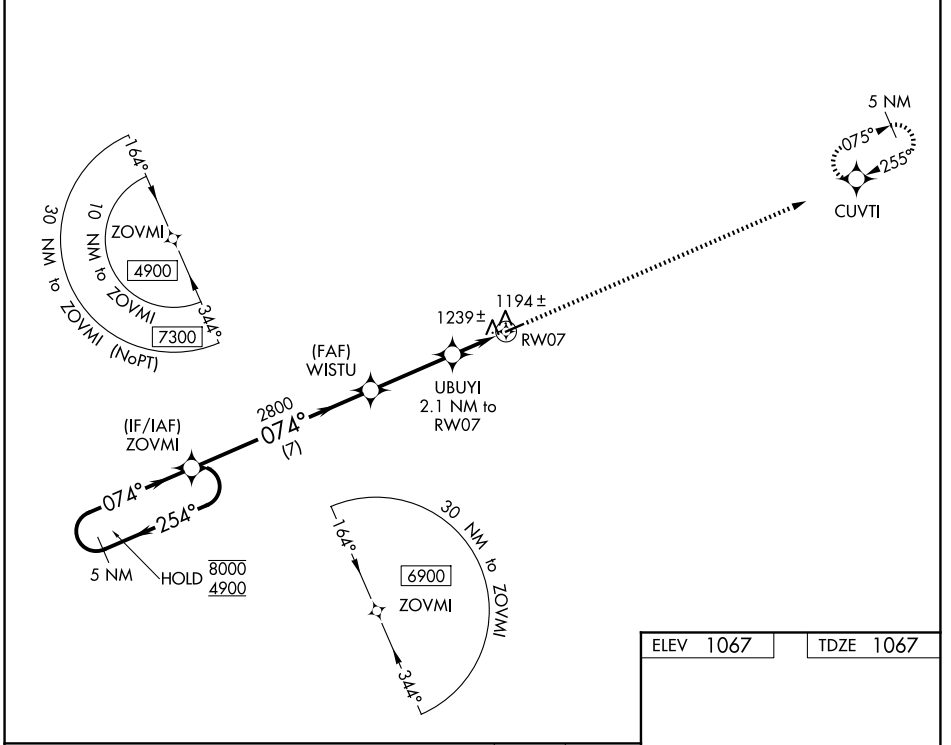


RNAV (GPS) RWY 7

ELKIN MUNI (ZEF)

| | | | |
|---------------------------------|------------------------|-----------------------------|---|
| WAAS CH 65836 W07A | APP CRS 074° | Rwy Ldg TDZE Apt Elev | 4001 1067 1067 |
|---------------------------------|------------------------|-----------------------------|---|

| | | |
|---|--|--|
| RNP APCH. | <p>Procedure NA at night. Obtain local altimeter setting on CTAF; when not received, use Mount Airy altimeter setting and increase all MDAs 80 feet and all Cats C/D visibilities ¼ SM. Rwy 7 helicopter visibility reduction below 1 SM NA.</p> | <p>MISSED APPROACH: Climb to 5100 direct CUVTI and hold, continue climb-in-hold to 5100.</p> |
| <p>ATLANTA CENTER 125.15 263.0</p> | | <p>UNICOM 123.05 (CTAF)</p> |



| | |
|-----------|-----------|
| ELEV 1067 | TDZE 1067 |
|-----------|-----------|

Detailed view of the final approach segment. The path is a 0.8% up slope. The runway is 4001 x 75 feet. The approach is at a 074° heading. Obstacles are shown as vertical lines with their MSL altitudes: 4001, 4001, and 4001. The missed approach path is shown as a dotted line starting at RW07 and climbing to 5100 feet at CUVTI.

| CATEGORY | A | B | C | D |
|----------|-----------------------|-----------------------|-------------------------|-------------------------|
| LP MDA | 1460-1 | 393 (400-1) | 1460-1½ | 393 (400-1½) |
| LNAV MDA | 1500-1 | 433 (500-1) | 1500-1¼ | 433 (500-1¼) |
| CIRCLING | 1540-1 473 (500-1) | 1600-1 533 (600-1) | 1680-1¾ 613 (700-1¾) | 1840-2½ 773 (800-2½) |

SE-2, 11 JUN 2026 to 09 JUL 2026

SE-2, 11 JUN 2026 to 09 JUL 2026

MRL Rwy 7-25
REIL Rwy 7 and Rwy 25