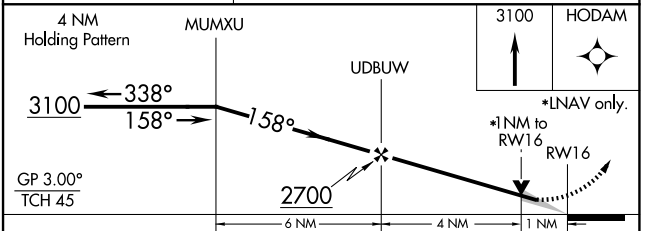
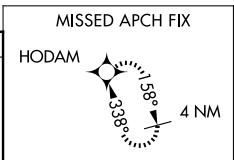
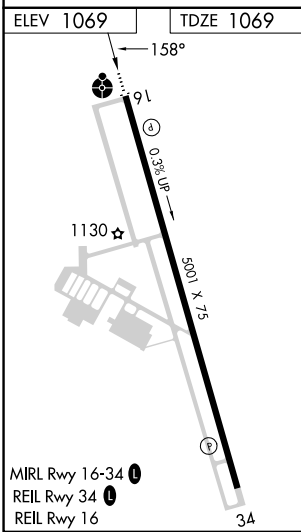
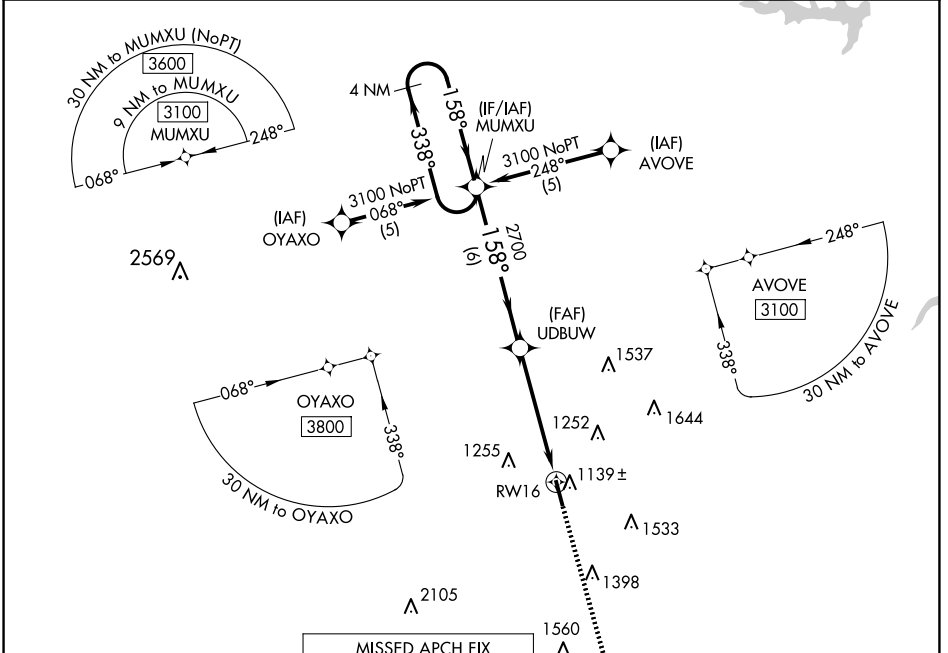


WAAS CH <b>56308</b> W16A	APP CRS <b>158°</b>	Rwy Idg TDZE Apt Elev	<b>5001</b> <b>1069</b> <b>1069</b>
---------------------------------	------------------------	-----------------------------	---

# RNAV (GPS) RWY 16

GUTHRIE/EDMOND RGNL (GOK)

<p><b>⚠</b> DME/DME RNP-0.3 NA. VDP NA when using OKC Will Rogers Intl altimeter setting. When local altimeter setting not received, use OKC Will Rogers Intl altimeter setting and increase DA/MDA 100 feet and LPV all Cats visibility ¼ mile.</p>	<p>ODALS ⚙️ ⋮</p>	<p>MISSED APPROACH: Climb to 3100 direct HODAM and hold.</p>
<p>ASOS <b>133.975</b></p>	<p>OKE CITY APP CON <b>124.2 336.4</b></p>	<p>UNICOM <b>122.8 (CTAF)</b> 📻</p>



CATEGORY	A	B	C	D
LPV DA	1319-1	250 (300-1)		NA
LNAV MDA	1420-1	351 (400-1)		NA
CIRCLING	1540-1 471 (500-1)	1560-1 491 (500-1)		NA

SC-1, 11 JUN 2026 to 09 JUL 2026

SC-1, 11 JUN 2026 to 09 JUL 2026