


LOC I-FXE <b>111.1</b>	APP CRS <b>091°</b>	Rwy Ldg <b>6002</b>
		TDZE <b>13</b>
		Apt Elev <b>13</b>

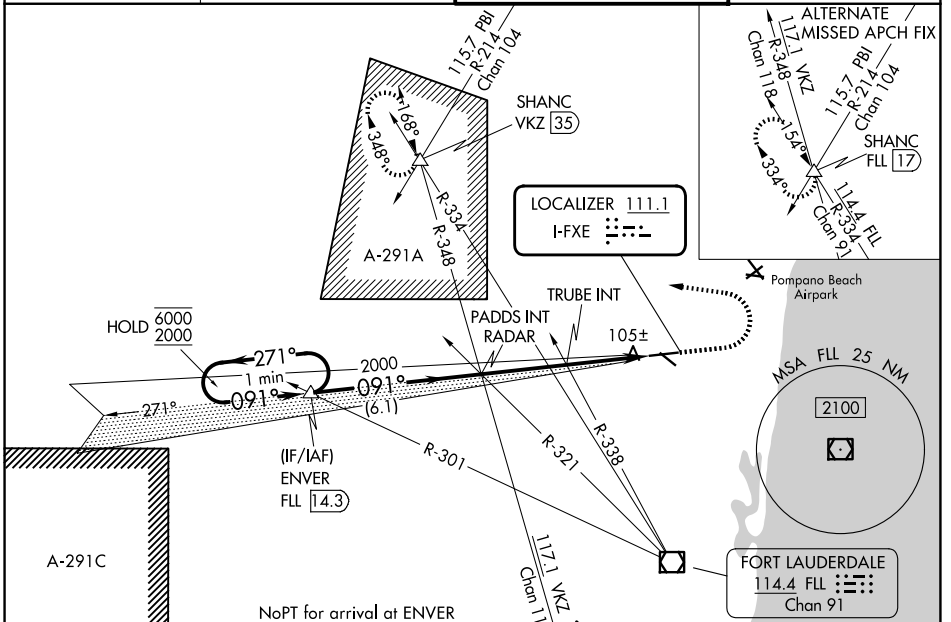
# ILS or LOC RWY 9

FORT LAUDERDALE EXEC (FXE)

When local altimeter setting not received, use FLL altimeter setting: increase S-ILS 9 DA to 231 feet; increase all MDAs 20 feet.

MALSR  MISSED APPROACH: Climb to 1000 then climbing left turn to 2100 on heading 285° and on VKZ VOR/DME R-348 to SHANC INT/VKZ 35 DME and hold.

ATIS <b>119.85</b>	MIAMI APP CON <b>119.7 306.3</b>	EXECUTIVE TOWER <b>120.9 239.3</b>	GND CON <b>121.75</b>
-----------------------	-------------------------------------	---------------------------------------	--------------------------



*500 when using FLL altimeter setting. One Minute Holding Pattern	ENVER FLL 14.3				1000	2100	VKZ R-348	SHANC
	PADDs INT RADAR				↑	hdg 285°	△	
6000 ← 271°		→ 091°		2000	TRUBE INT			
GS 3.00° TCH 55		2000		*480				
		6.1 NM		3.1 NM		3 NM		
CATEGORY	A	B	C	D				
S-ILS 9	213-½				200 (200-½)			
S-LOC 9*	480-½		467 (500-½)		480-1		467 (500-1)	
CIRCLING	520-1		620-1		780-2¼		780-2½	
	507 (600-1)		607 (700-1)		767 (800-2¼)		767 (800-2½)	
TRUBE FIX MINIMUMS (DUAL VOR RECEIVERS REQUIRED)								
S-LOC 9	360-½		347 (400-½)		360-¾		347 (400-¾)	
CIRCLING	520-1		620-1		780-2¼		780-2½	
	507 (600-1)		607 (700-1)		767 (800-2¼)		767 (800-2½)	

ELEV 13	TDZE 13
REIL Rwy 13, 27 and 31	
HIRL Rwy 9-27	
MIRL Rwy 13-31	
FAF to MAP 6.1 NM	
Knots	60 90 120 150 180
Min:Sec	6:06 4:04 3:03 2:26 2:02

SE-3, 11 JUN 2026 to 09 JUL 2026

SE-3, 11 JUN 2026 to 09 JUL 2026