

WAAS CH 45737 W16A	APP CRS 155°	Rwy Ldg 4997 TDZE 82 Apt Elev 83
---------------------------------	------------------------	---

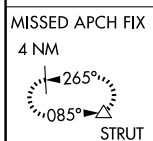
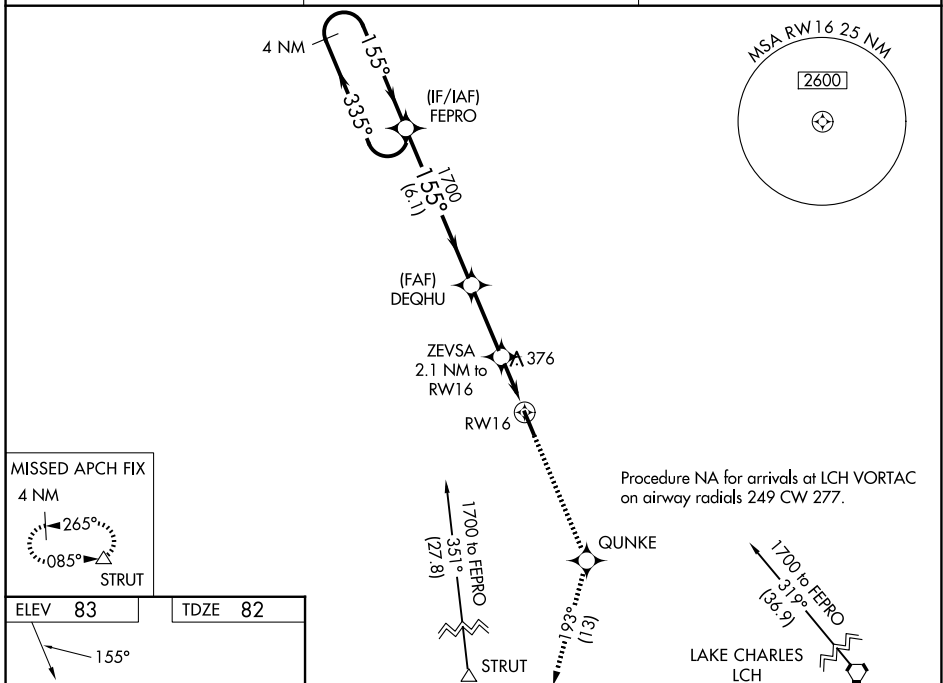
RNAV (GPS) RWY 16

DE QUINCY INDUSTRIAL AIRPARK (5R8)

⚠ NA Baro-VNAV NA when using Sulphur altimeter setting. DME/DME RNP-0.3 NA.
 When local altimeter setting not received, use Sulphur altimeter setting and increase all DA 55 feet and MDA 60 feet, increase LPV visibility all Cats ¼, LNAV/VNAV all Cats ¼ and LNAV and Circling Cat C visibility ¼ mile. For uncompensated Baro-VNAV systems, LNAV/VNAV NA below -15°C (5°F) or above 54°C (130°F). Helicopter visibility reduction below 1 SM NA. Night landing: Rwy 16 NA.

MISSED APPROACH: Climb to 2000 direct QUNKE and on track 193° to STRUT and hold.

AWOS-3PT 121.2	LAKE CHARLES APP CON * 119.35 282.3	UNICOM 122.8 (CTAF) ①
--------------------------	---	---------------------------------



ELEV 83	TDZE 82
---------	---------

4 NM Holding Pattern FEPRO DEQHU 1700 ZEVS 2.1 NM to RW16 QUNKE 2.1 NM to RW16 STRUT 193° LAKE CHARLES LCH	2000	GUNKE	tr 193°	STRUT
	*LNAV only			
1700 ← 335° 155° → GP 3.00° TCH 50 6.1 NM 2.8 NM 2.1 NM	RW16 *800			
CATEGORY LPV DA LNAV/VNAV DA LNAV MDA CIRCLING	A 365-1 799-2½ 700-1 700-1 617 (700-1)	B 283 (300-1) 717 (800-2½) 618 (700-1) 740-1 657 (700-1)	C 700-1¾ 618 (700-1¾) 740-1¾ 657 (700-1¾)	D NA NA NA NA

DE QUINCY, LOUISIANA
 Amdt 2 05MAR15

30°26'N-93°28'W

DE QUINCY INDUSTRIAL AIRPARK (5R8)

RNAV (GPS) RWY 16

SC-4, 11 JUN 2026 to 09 JUL 2026

SC-4, 11 JUN 2026 to 09 JUL 2026