

| | | | |
|--|------------------------|-----------------------------|---|
| WAAS CH 42505 W31A | APP CRS 314° | Rwy Ldg TDZE Apt Elev | 6500 487 501 |
|--|------------------------|-----------------------------|---|

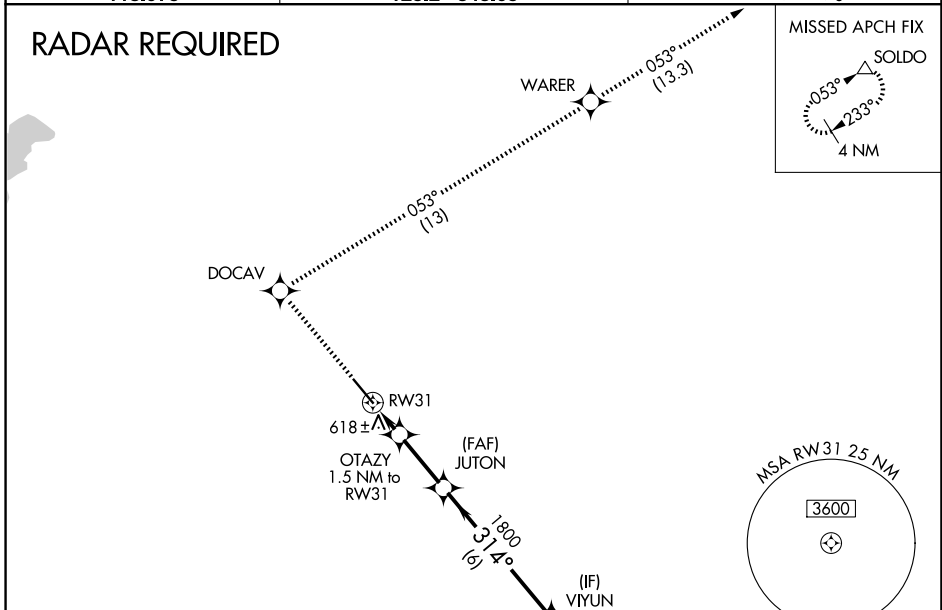
RNAV (GPS) RWY 31

LANCASTER RGNL (LNC)

⚠ For uncompensated Baro-VNAV systems, LNAV/VNAV NA below -16°C (4°F) or above 47°C (116°F). DME/DME RNP-0.3 NA. Baro-VNAV NA when using Dallas Exec altimeter setting. When local altimeter setting not received, use Dallas Exec altimeter setting and increase LPV DA to 732 feet; increase LNAV/VNAV DA to 970 feet and visibility all Cats ¼ SM; increase all MDAs 60 feet and LNAV Cats C/D and Circling Cats C/D visibility ¼ SM.

MISSED APPROACH: Climb to 2000 direct DOCAV and right turn on track 053° to WARER then climb to 3000 on track 053° to SOLDO and hold.

| | | |
|----------------------------|--|---------------------------------|
| AWOS-3PT 118.975 | LONE STAR APP CON 125.2 343.65 | UNICOM 122.7 (CTAF) 0 |
|----------------------------|--|---------------------------------|



| | |
|----------|----------|
| ELEV 501 | TDZE 487 |
|----------|----------|

| | | | | | | |
|--------------|----------------------|-----------------------|-------------------------|-------------------------|------------------------|-----------------|
| | 2000 | DOCAV | WARER | 3000 | SOLDO | VIYUN |
| | ↑ | ✦ | tr 053° | ↑ | △ | |
| | * LNAV only | | JUTON | | | |
| | RW31 | | OTAZY 1.5 NM to RW31 | 1800 | 2700 | GP 3.00° TCH 50 |
| | 1.5 NM | | 2.5 NM | 6 NM | | |
| | 1000* | | 1800 | 314° | | |
| CATEGORY | A | B | C | D | | |
| LPV DA | 687-¾ | | 200 (200-¾) | | | |
| LNAV/VNAV DA | 925-1½ | | 438 (500-1½) | | | |
| LNAV MDA | 880-1 | | 393 (400-1) | | 880-1¼ 393 (400-1¼) | |
| CIRCLING | 980-1 479 (500-1) | 1020-1 519 (600-1) | 1300-2¼ 799 (800-2¼) | 1300-2½ 799 (800-2½) | | |

SC-2, 11 JUN 2026 to 09 JUL 2026

SC-2, 11 JUN 2026 to 09 JUL 2026