

WAAS CH 86622 W13A	APP CRS 136°	Rwy Idg 4400 TDZE 642 Apt Elev 660
--	------------------------	---

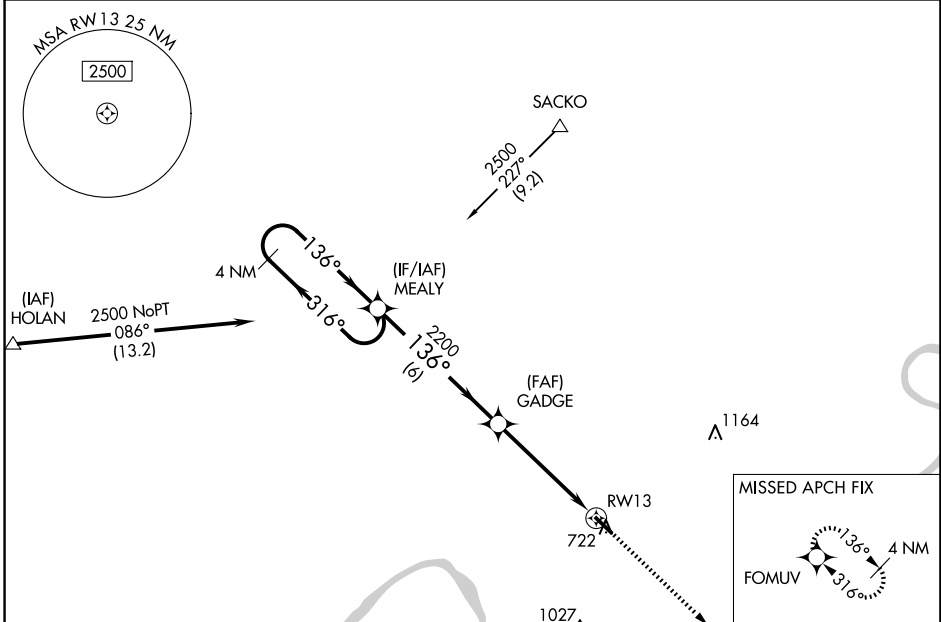
RNAV (GPS) RWY 13

PERRY COUNTY MUNI (TEL)

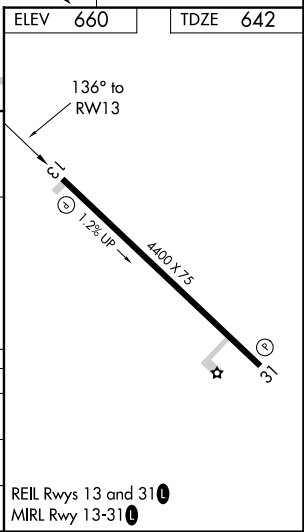
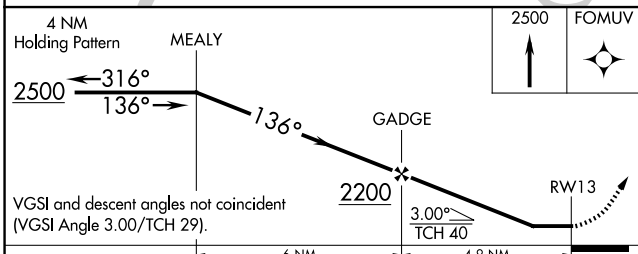
▼ When VGSi inop, Circling Rwy 31 NA at night. When VGSi inop, Straight-in/Circling Rwy 13 procedure NA at night. DME/DME RNP-0.3 NA. Visibility reduction by helicopters NA.
▲ NA Obtain local altimeter setting on CTAF; when not received, use Huntingburg altimeter setting and increase all MDA 80 feet and increase LP Cat C visibility ¼ mile and LNAV Cat C visibility ⅓ mile.

MISSED APPROACH: Climb to 2500 direct FOMUV and hold.

EVANSVILLE APP CON * 124.025 290.9	UNICOM 122.7 (CTAF) 0
--	---------------------------------



ELEV 660	TDZE 642
----------	----------



CATEGORY	A	B	C	D
LP MDA	1000-1	358 (400-1)	1000-1 ⅛ 358 (400-1 ⅛)	NA
LNAV MDA	1040-1	398 (400-1)	1040-1 ¼ 398 (400-1 ¼)	NA
CIRCLING	1080-1 420 (500-1)	1120-1 460 (500-1)	1120-1 ½ 460 (500-1 ½)	NA

REIL Rwy 13 and 31
MIRL Rwy 13-31

EC-2, 11 JUN 2026 to 09 JUL 2026

EC-2, 11 JUN 2026 to 09 JUL 2026