

LOC/DME I-MDQ 109.75 Chan 34(Y)	APP CRS 185°	Rwy Ldg TDZE Apt Elev	6500 740 764
--	------------------------	-----------------------------	---

ILS or LOC RWY 18

HUNTSVILLE EXEC TOM SHARP JR FLD (MDQ)

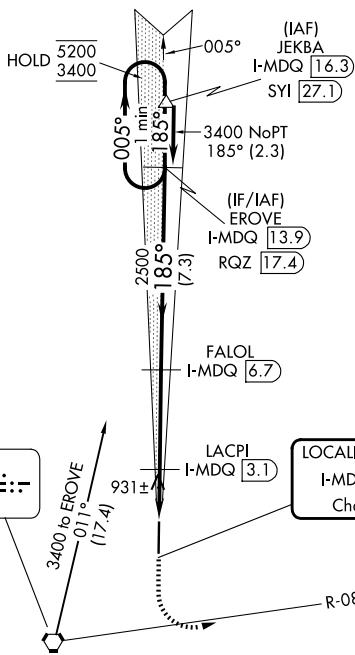
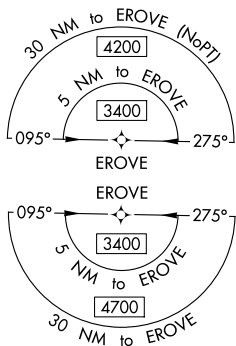
DME or RNAV 1- GPS required.

▼ Rwy 18 helicopter visibility reduction below ¾ SM NA.

▲

MISSED APPROACH: Climb to 1200 then climbing left turn to 4000 on heading 120° and on RQZ VORTAC R-080 to PRONE INT and hold, continue climb-in-hold to 4000.

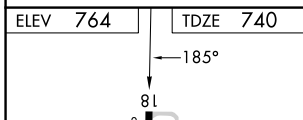
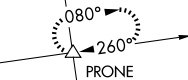
AWOS-3PT 120.0	HUNTSVILLE APP CON * 125.6 354.1	GCO 121.725	UNICOM 123.0 (CTAF) 0
--------------------------	--	-----------------------	---------------------------------



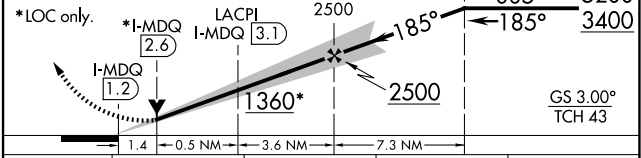
113.55 SVI
Chan 82 (Y)

ROCKET
112.2 RQZ
Chan 59

LOCALIZER 109.75
I-MDQ
Chan 34(Y)



1200	4000	RQZ R-080	PRONE	EROVE I-MDQ 13.9	One Minute Holding Pattern
↑	hdg 120°		△		



CATEGORY	A	B	C	D
S-ILS 18	940-¾		200 (200-¾)	
S-LOC 18	1200-1		460 (500-1)	
CIRCLING	1260-1	496 (500-1)	1560-2¼ 796 (800-2¼)	2000-3 1236 (1300-3)

MIRL Rwy 18-36
REIL Rws 18 and 36

SE-4, 11 JUN 2026 to 09 JUL 2026

SE-4, 11 JUN 2026 to 09 JUL 2026