

| | | |
|-------------|----------|-------------|
| APP CRS | Rwy Ldg | 3503 |
| 346° | TDZE | 665 |
| | Apt Elev | 665 |

RNAV (GPS) RWY 35

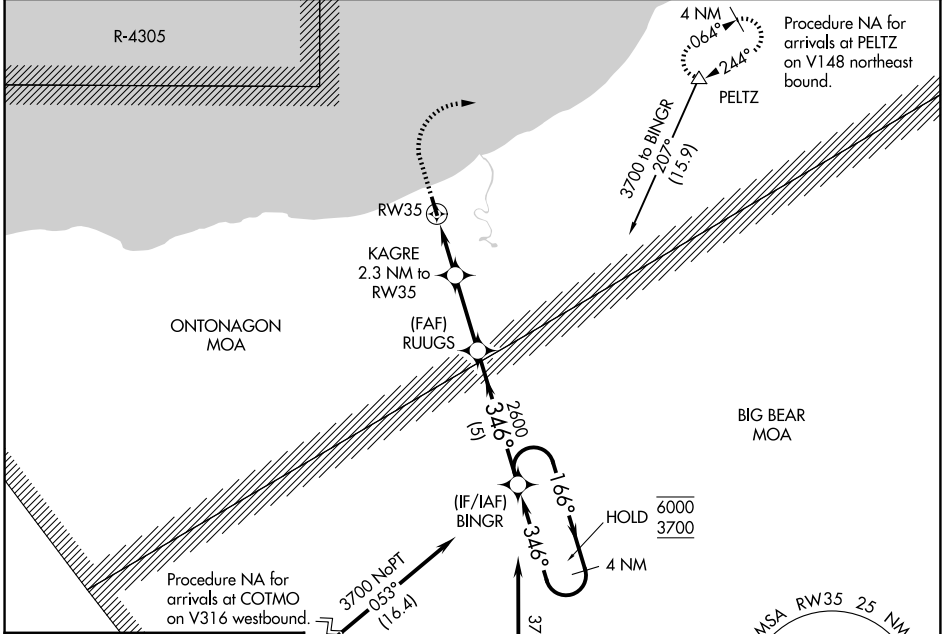
ONTONAGON COUNTY/SCHUSTER FLD (OGM)

RNP APCH - GPS.

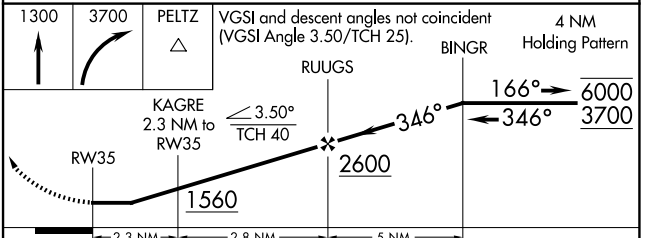
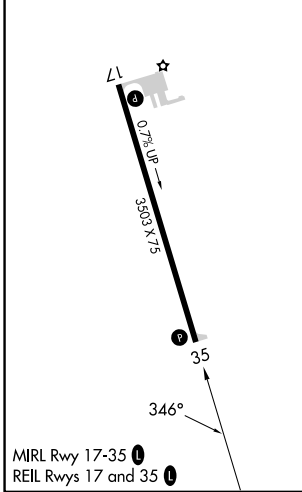
▽ Rwy 35 helicopter visibility reduction below 1 SM NA.
▲ NA Procedure NA at night. Use CMX altimeter setting.

MISSED APPROACH: Climb to 1300 then climbing right turn to 3700 direct PELTZ and hold, continue climb-in-hold to 3700.

| | | |
|----------------------------|---|----------------------|
| CMX ASOS 125.675 | MINNEAPOLIS CENTER 133.55 379.1 | CTAF 122.9 |
|----------------------------|---|----------------------|



| | |
|----------|----------|
| ELEV 665 | TDZE 665 |
|----------|----------|



| CATEGORY | A | B | C | D |
|----------|--------|-------------|-------------------------|----|
| LNAV MDA | 1280-1 | 615 (700-1) | 1280-1¾ 615 (700-1¾) | NA |
| CIRCLING | 1320-1 | 655 (700-1) | 1420-2¼ 755 (800-2¼) | NA |

EC-1, 11 JUN 2026 to 09 JUL 2026

EC-1, 11 JUN 2026 to 09 JUL 2026