

WAAS CH <b>60940</b> <b>W14A</b>	APP CRS <b>135°</b>	Rwy Ldg TDZE Apt Elev	<b>4000</b> <b>1392</b> <b>1402</b>
--	------------------------	-----------------------------	---

# RNAV (GPS) RWY 14

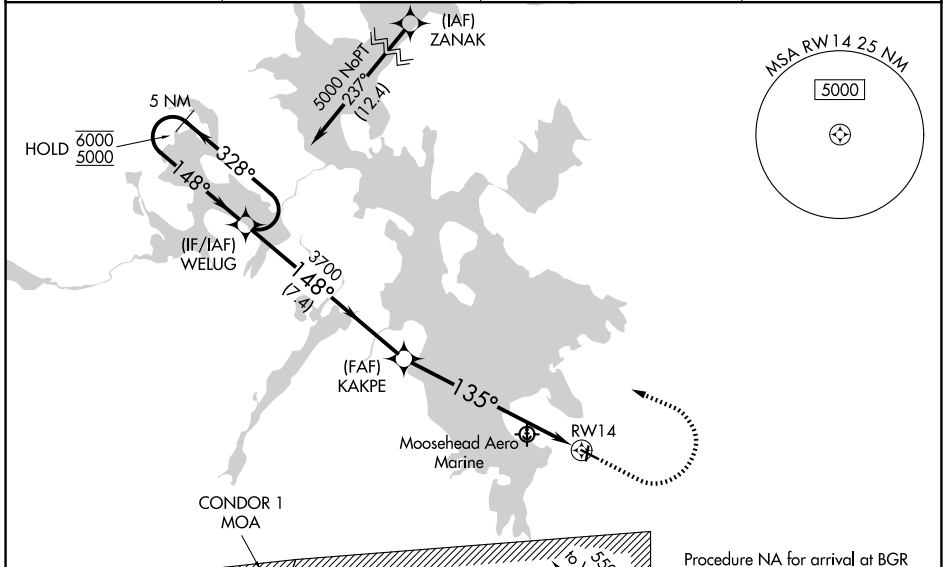
GREENVILLE MUNI (3B1)

RNP APCH - GPS.

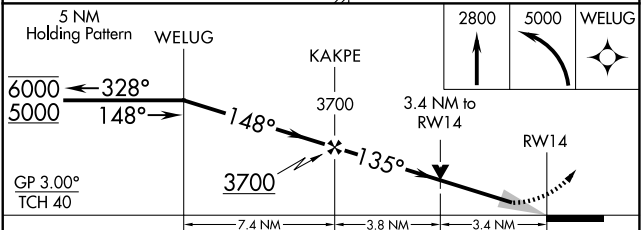
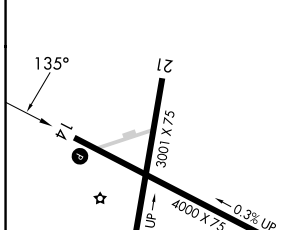
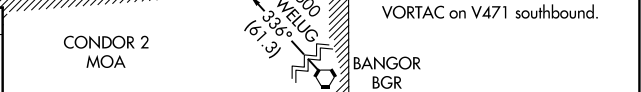
Baro-VNAV and VDP NA when using BGR altimeter setting. For uncompensated Baro-VNAV systems, LNAV/VNAV NA below -23°C or above 54°C. Circling Rwy 3, 21 NA at night. Circling NA north of Rwy 14-32. When local altimeter setting not received, use BGR altimeter setting and increase LPV DA\* to 1952 feet and all visibilities 5/8 SM. Increase LPV DA to 2490 feet and all visibilities 1/2 SM. Increase LNAV/VNAV DA to 2595 feet and all visibilities 1 SM. Increase all MDAs 300 feet.

MISSED APPROACH: Climb to 2800 then climbing left turn to 5000 direct WELUG and hold.  
\*Missed approach requires minimum climb of 215 feet per NM to 4200.

AWOS-A <b>124.175</b>	BOSTON CENTER <b>120.25 346.4</b>	CLNC DEL <b>122.3</b>	UNICOM <b>122.8 (CTAF)</b> <b>📶</b>
--------------------------	--------------------------------------	--------------------------	--



ELEV 1402	TDZE 1392
-----------	-----------



CATEGORY	A	B	C	D
LPV DA*	1667-1 275 (300-1)			
LPV DA	2205-2 1/2 813 (900-2 1/2)			
LNAV/VNAV DA	2310-4 918 (1000-4)			
LNAV MDA	2500-1 1/4 1108 (1100-1 1/4)	2500-1 1/2 1108 (1100-1 1/2)	2500-3	1108 (1100-3)
CIRCLING	2500-1 1/4 1098 (1100-1 1/4)	2500-1 1/2 1098 (1100-1 1/2)	2500-3 1098 (1100-3)	2660-3 1258 (1300-3)

REIL Rwy 14 **📶**  
MIRL Rwy 14-32 **📶**

NE-1, 11 JUN 2026 to 09 JUL 2026

NE-1, 11 JUN 2026 to 09 JUL 2026