

LOC/DME I-OCW 110.9 Chan 46	APP CRS 045°	Rwy Ldg TDZE Apt Elev	5000 35 37
---	------------------------	-----------------------------	---------------------------------------

LOC RWY 5

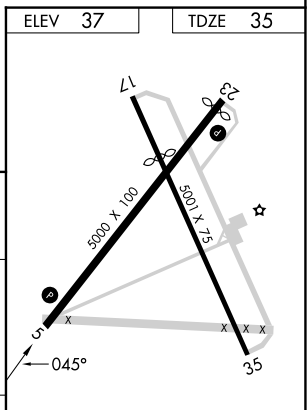
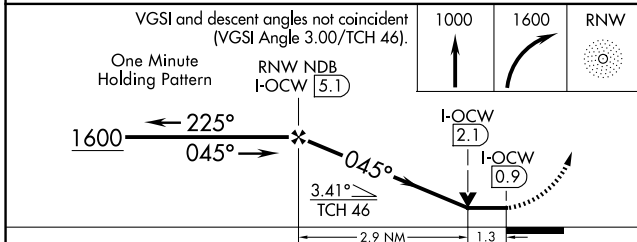
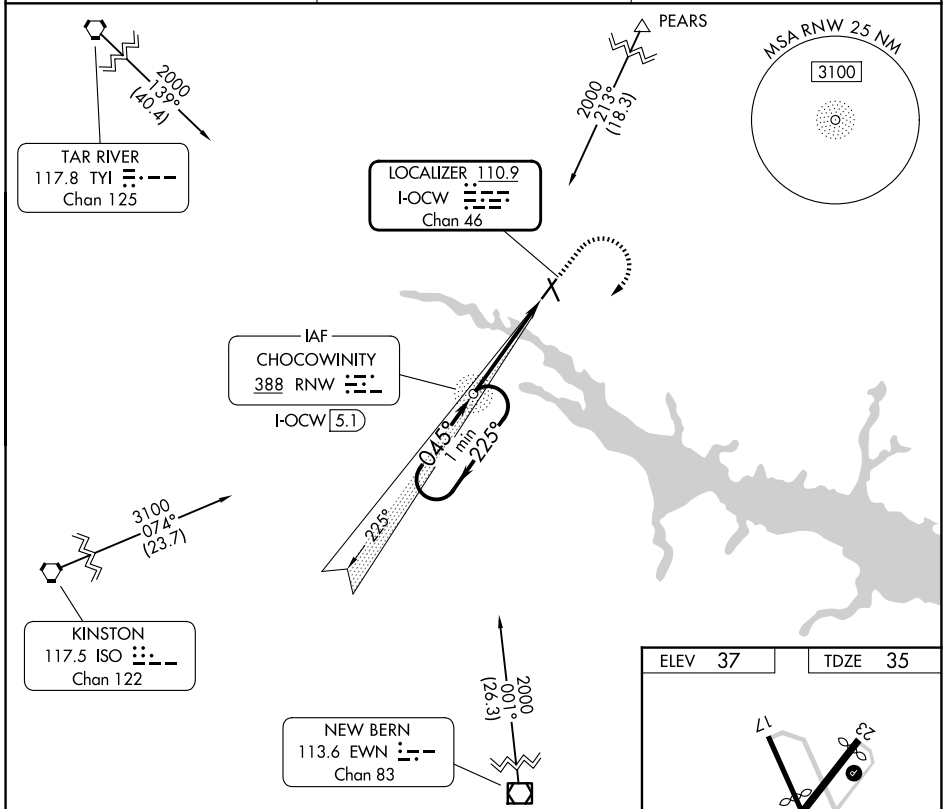
WASHINGTON-WARREN (OCW)

ADF required.

NA Circling Rwy 17 NA at night. When local altimeter setting not received, use Greenville altimeter setting and increase all MDAs 60 feet. Rwy 5 helicopter visibility reduction below ¼ SM NA.

MISSED APPROACH: Climb to 1000, then climbing right turn to 1600 direct RNW NDB and hold.

AWOS-3 120.175	CHERRY POINT APP CON 119.35 377.175	UNICOM 122.7 (CTAF) 0
--------------------------	---	--



CATEGORY	A	B	C	D
S-5	480-1 445 (500-1)		480-1¾ 445 (500-1¾)	
CIRCLING	540-1 503 (600-1)		640-1¾ 603 (700-1¾)	780-2½ 743 (800-2½)

REIL Rwy 5 and 23 0	
MIRL Rwys 5-23 0	
FAF to MAP 4.2 NM	
Knots	60 90 120 150 180
Min:Sec	4:12 2:48 2:06 1:41 1:24

SE-2, 11 JUN 2026 to 09 JUL 2026

SE-2, 11 JUN 2026 to 09 JUL 2026