

VORTAC LCH <b>113.4</b> Chan 81	APP CRS <b>060°</b>	Rwy Idg <b>2700</b> TDZE <b>18</b> Apt Elev <b>18</b>
---------------------------------------	------------------------	---

# VOR/DME or GPS RWY 7

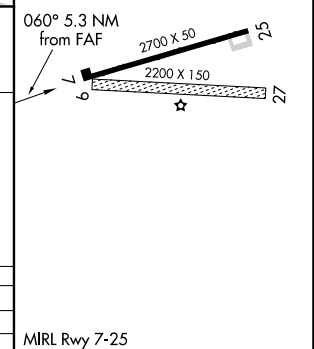
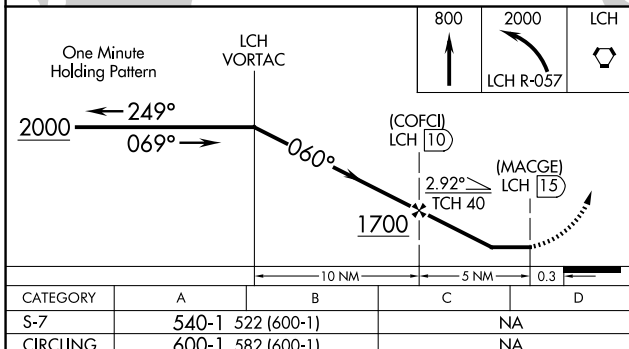
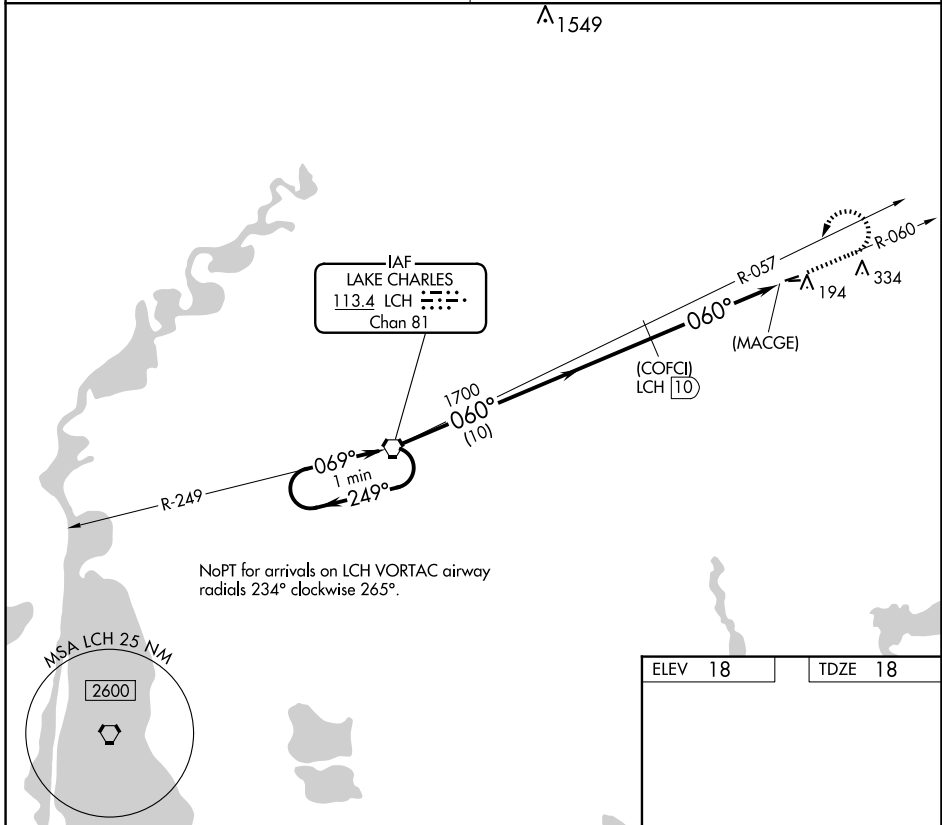
WELSH (6R1)

**▼** Use Lake Charles altimeter setting. Procedure NA at night.  
**▲ NA** Circling NA to Rwys 9 and 27.

MISSED APPROACH: Climb to 800 then climbing left turn to 2000 via LCH R-057 to LCH VORTAC.

LAKE CHARLES APP CON ★  
**119.8 282.3**

UNICOM  
**122.8 (CTAF)**



SC-4, 11 JUN 2026 to 09 JUL 2026

SC-4, 11 JUN 2026 to 09 JUL 2026