

WAAS CH 53437 W14A	APP CRS 139°	Rwy Ldg 5004 TDZE 30 Apt Elev 32
--	------------------------	---

RNAV (GPS) RWY 14

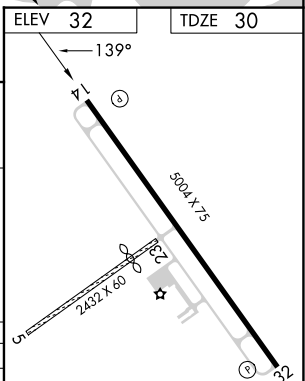
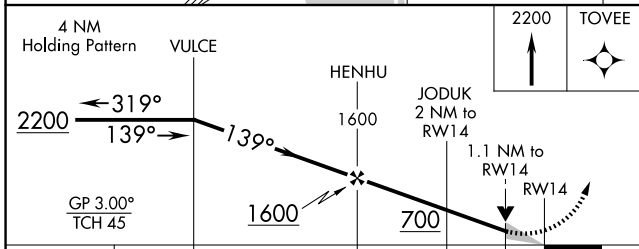
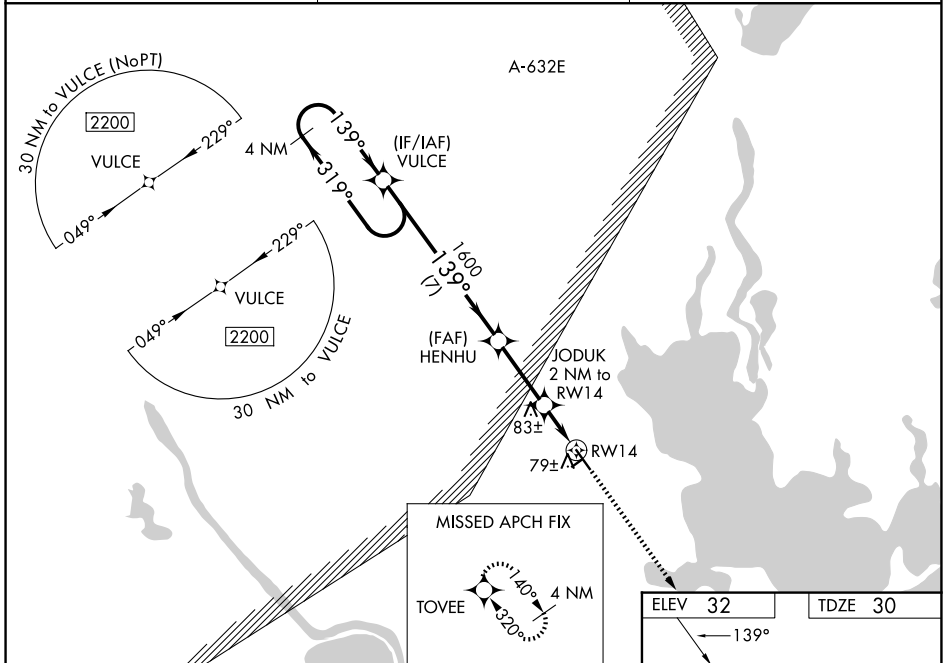
CALHOUN COUNTY (PKV)

RNP APCH - GPS.

⚠ Baro-VNAV and VDP NA when using Victoria altimeter setting. For uncompensated Baro-VNAV systems, LNAV/VNAV NA below -15°C or above 54°C. When local altimeter setting not received, use Victoria altimeter setting and increase LPV DA and LNAV/VNAV DA to 331 feet and all visibilities 1/8 SM; increase all MDAs 60 feet and LNAV visibility Cat C 1/4 SM. Circling Rwy 32 NA at night. Circling NA to Rwys 5 and 23.

MISSED APPROACH:
Climb to 2200 direct TOVEE and hold.

AWOS-3 118.275	HOUSTON CENTER 135.05 353.6	UNICOM 122.8 (CTAF) 0
--------------------------	---------------------------------------	---------------------------------



CATEGORY	A	B	C	D
LPV DA	280-3/4	250 (300-3/4)		NA
LNAV/VNAV DA	280-3/4	250 (300-3/4)		NA
LNAV MDA	440-1	410 (500-1)	440-1/8 410 (500-1/8)	NA
CIRCLING	520-1	488 (500-1)	560-1/2 528 (600-1/2)	NA

MIRL Rwy 14-32 0

SC-5, 11 JUN 2026 to 09 JUL 2026

SC-5, 11 JUN 2026 to 09 JUL 2026