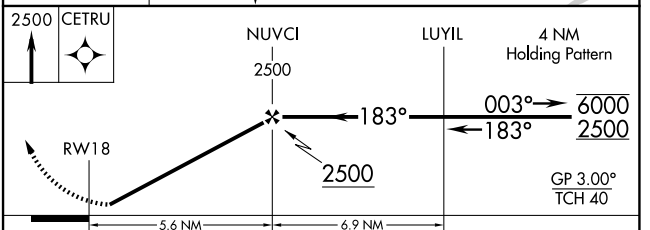
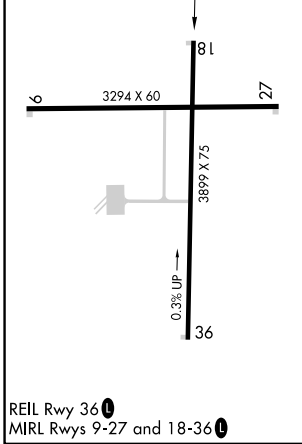
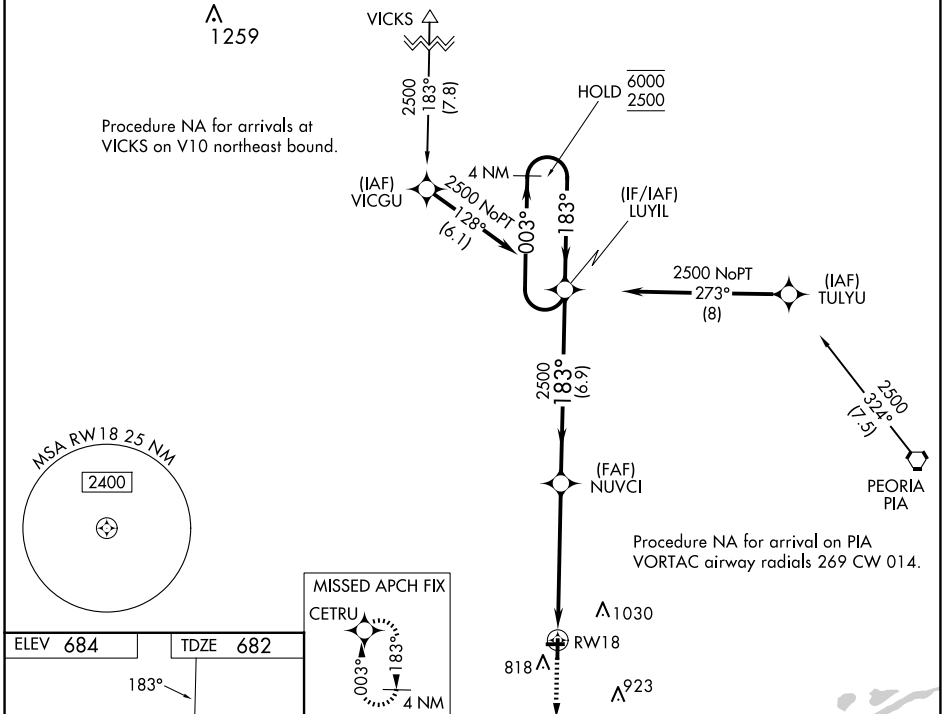


WAAS CH <b>93931</b> <b>W18A</b>	APP CRS <b>183°</b>	Rwy Ldg TDZE Apt Elev	<b>3899</b> <b>682</b> <b>684</b>
--	------------------------	-----------------------------	---

# RNAV (GPS) RWY 18

INGERSOLL (CTK)

RNP APCH - GPS.		MISSED APPROACH: Climb to 2500 direct CETRU and hold.
⚠ Baro-VNAV NA. Rwy 18 helicopter visibility reduction below ¼ SM NA. ⚠ NA Use PIA altimeter setting; when not received, procedure NA.		
PIA ASOS <b>126.1 282.2</b>	SAINT LOUIS APP CON <b>125.8 269.2</b>	UNICOM <b>122.8 (CTAF) 0</b>



CATEGORY	A	B	C	D
LPV DA	995-1	313 (400-1)		NA
LNAV/VNAV DA	1128-1 3/8	446 (500-1 3/8)		NA
LNAV MDA	1300-1	618 (700-1)	1300-1 3/4 618 (700-1 3/4)	NA
CIRCLING	1300-1 616 (700-1)	1440-1 756 (800-1)	1440-2 1/4 756 (800-2 1/4)	NA

EC-3, 11 JUN 2026 to 09 JUL 2026

EC-3, 11 JUN 2026 to 09 JUL 2026