

LOC/DME I-ORK <b>111.9</b> Chan <b>56</b>	APP CRS <b>053°</b>	Rwy Ldg <b>5002</b> TDZE <b>541</b> Apt Elev <b>545</b>
---	------------------------	---

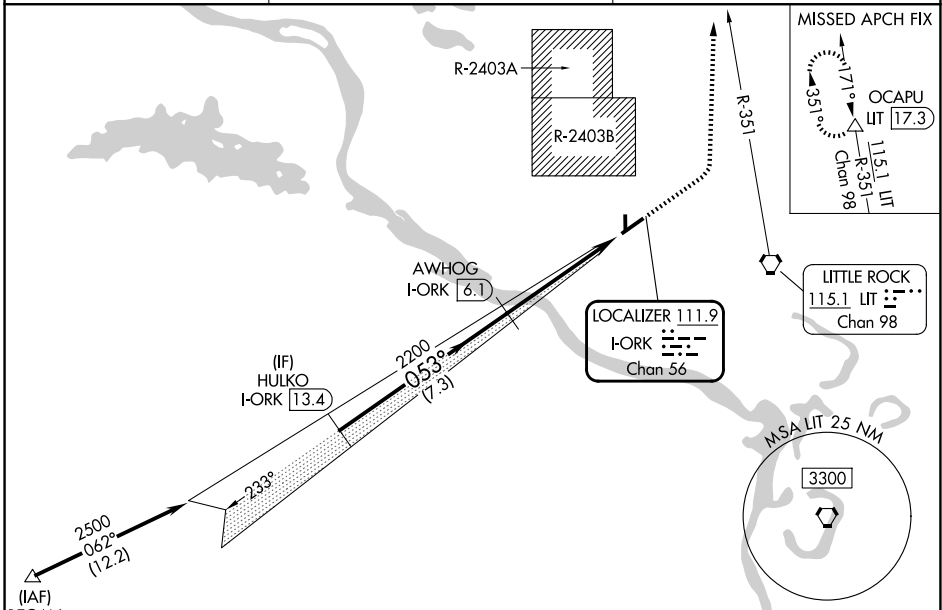
# LOC RWY 5

NORTH LITTLE ROCK MUNI (ORK)

RNP APCH - GPS. From BEGAN.  
DME and RADAR required.  
⚠ Circling NA for Cats B and C north of Rwy 5-23 when R-2403B active.

MISSED APPROACH: Climb to 1700 then climbing left turn to 4000 on heading 360° and LIT VORTAC R-351 to OCAPU/LIT 17.3 DME and hold.

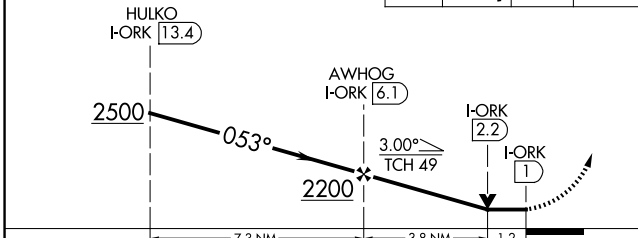
AWOS-3PT <b>123.775</b>	LITTLE ROCK APP CON <b>119.5 306.2</b>	UNICOM <b>123.075 (CTAF)</b>
----------------------------	---	---------------------------------



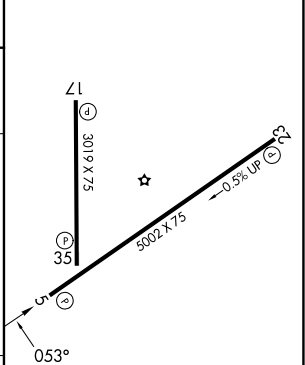
Procedure NA for arrivals at BEGAN on V124 southwest bound.

Use I-ORK DME when on the localizer course.

1700	4000	LIT R-351	OCAPU
↑	hdg 360°	△	



ELEV 545	TDZE 541
----------	----------



CATEGORY	A	B	C	D
S-LOC 5	980-1	439 (500-1)	980-1¼ 439 (500-1¼)	NA
CIRCLING	1040-1	495 (500-1)	1080-1½ 535 (600-1½)	NA

REIL Rws 5, 17, and 23  
MRL Rws 5-23 and 17-35

SC-1, 11 JUN 2026 to 09 JUL 2026

SC-1, 11 JUN 2026 to 09 JUL 2026