

APP CRS	Rwy Ldg	N/A
360°	TDZE	N/A
	Apt Elev	1357

RNAV (GPS)-B

CHERRY RIDGE (N30)

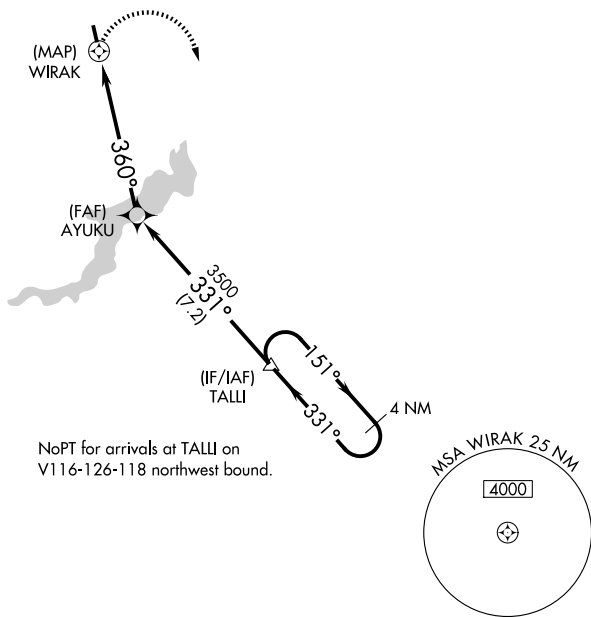
⚠ DME/DME RNP-0.3 NA. Procedure NA at night. Obtain local altimeter setting on CTAF; when not received, use Wilkes-Barre/Scranton Intl altimeter setting, and increase MDA 320 feet and Cat A visibility ¼ mile.

⚠ NA

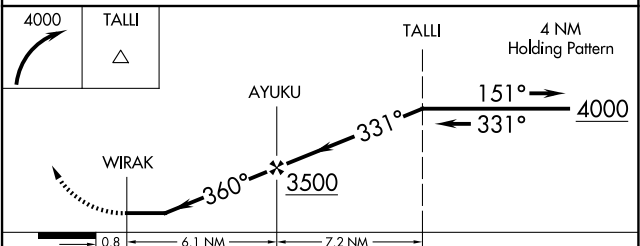
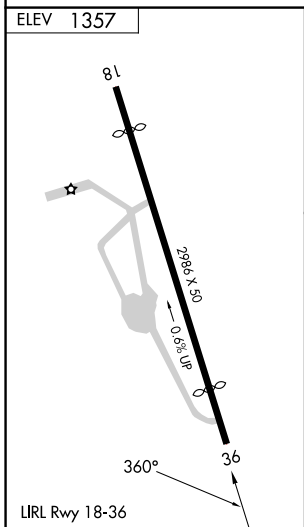
MISSED APPROACH: Climbing right turn to 4000 direct TALLI and hold.

WILKES-BARRE APP CON **120.95 256.7**

UNICOM **122.8 (CTAF)**



NoPT for arrivals at TALLI on V116-126-118 northwest bound.



CATEGORY	A	B	C	D
CIRCLING	2080-1 723 (800-1)		NA	