

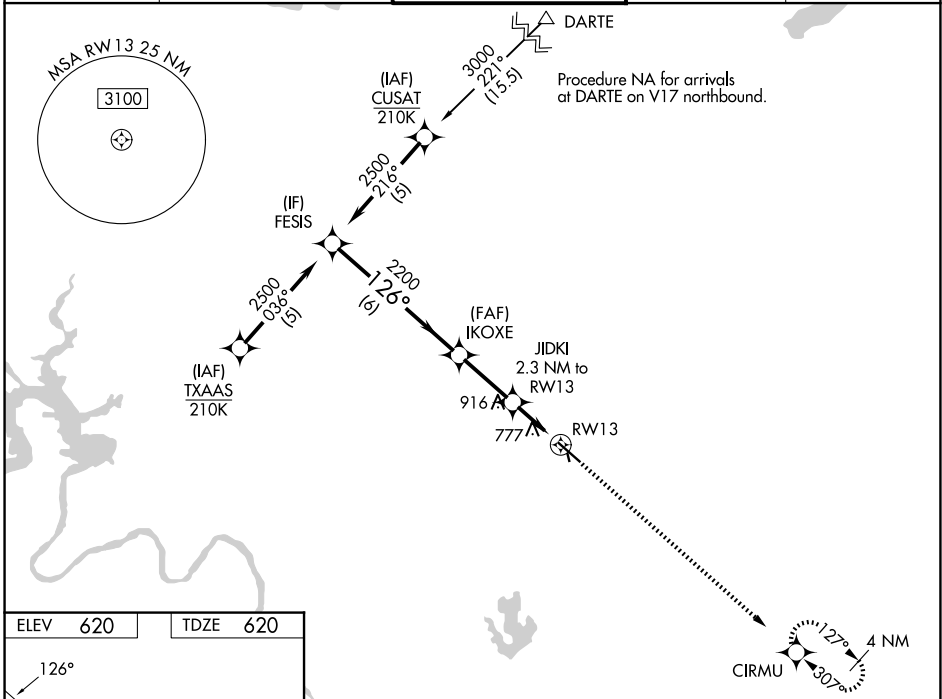
WAAS CH <b>63116</b> <b>W13A</b>	APP CRS <b>126°</b>	Rwy Ldg TDZE Apt Elev	<b>5425</b> <b>620</b> <b>620</b>
----------------------------------------	------------------------	-----------------------------	-----------------------------------------

# RNAV (GPS) RWY 13

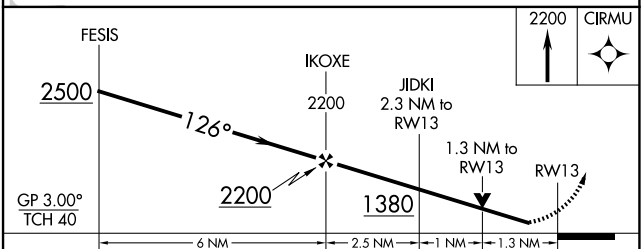
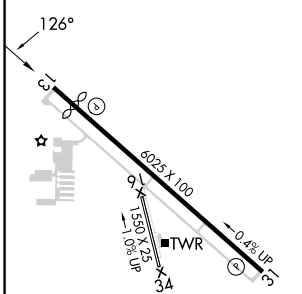
AUSTIN EXEC (EDC)

RNP APCH - GPS.	MISSED APPROACH: Climb to 2200 direct CIRMU and hold.
<p>⚠ Circling NA to Rwy 16 and 34. Rwy 13 helicopter visibility reduction below <math>\frac{3}{4}</math> SM NA. For uncompensated Baro-VNAV systems, LNAV/VNAV NA below -16°C or above 54°C.</p>	

AWOS-3 <b>118.825</b>	AUSTIN APP CON <b>127.225 317.65</b>	EXECUTIVE TOWER ★ <b>120.3 (CTAF) 0</b>	GND CON <b>119.45</b>	UNICOM <b>122.975</b>
--------------------------	-----------------------------------------	--------------------------------------------	--------------------------	--------------------------



ELEV 620	TDZE 620
----------	----------



CATEGORY	A	B	C	D
LPV DA		870- $\frac{3}{4}$ 250 (300- $\frac{3}{4}$ )		
LNAV/VNAV DA		1080-1 $\frac{3}{8}$ 460 (500-1 $\frac{3}{8}$ )		
LNAV MDA	1080-1	460 (500-1)	1080-1 $\frac{3}{8}$ 460 (500-1 $\frac{3}{8}$ )	
CIRCLING	1140-1 520 (600-1)	1160-1 540 (600-1)	1280-1 $\frac{3}{4}$ 660 (700-1 $\frac{3}{4}$ )	1280-2 660 (700-2)

MIRL Rwy 13-31 0  
REIL Rwy 13 and 31 0

SC-3, 11 JUN 2026 to 09 JUL 2026

SC-3, 11 JUN 2026 to 09 JUL 2026