

APP CRS	Rwy Ldg	N/A
070°	TDZE	N/A
	Apt Elev	133

RNAV (GPS)-A

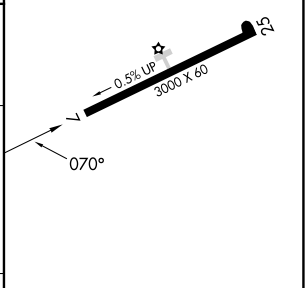
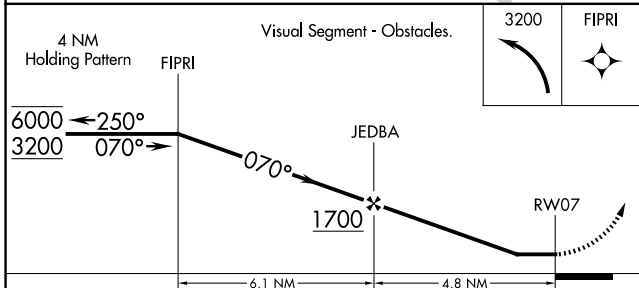
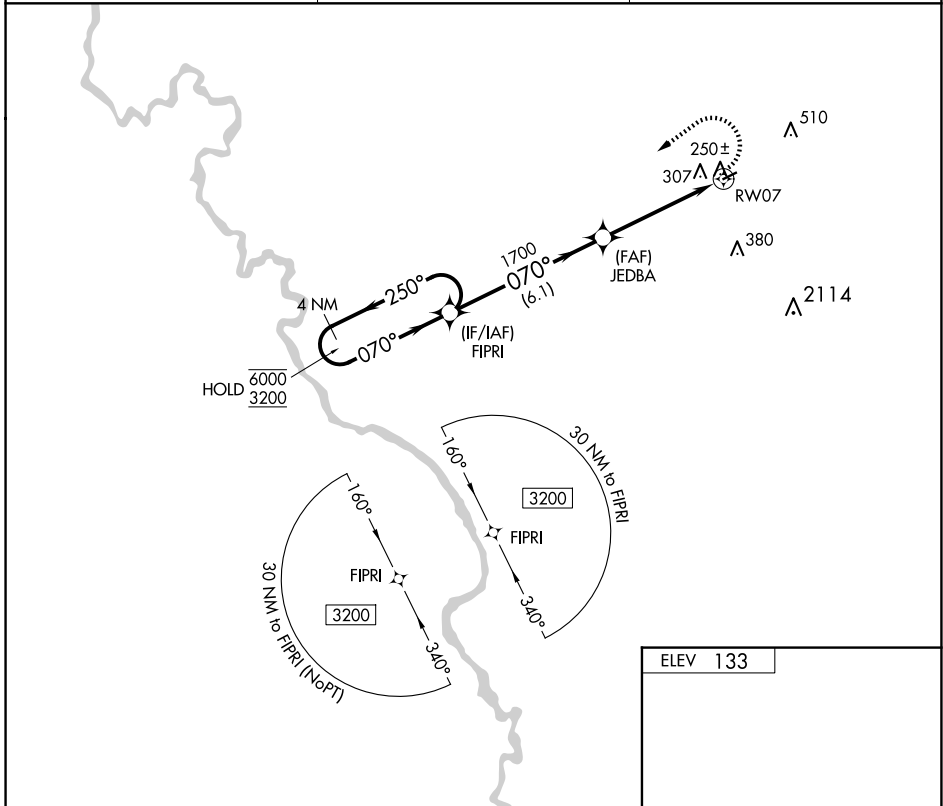
DILLON COUNTY (DLC)

RNP APCH - GPS.

▽ Rwy 7, 25 helicopter visibility reduction below 1 SM NA. Procedure NA at night.
▲NA Use FLO altimeter setting; when not received, procedure NA.

MISSED APPROACH: Climbing left turn to 3200 direct FIPRI and hold, continue climb-in-hold to 3200.

FLO ASOS 123.625	FLORENCE APP CON ★ 118.6 341.7	CTAF 122.9
----------------------------	--	----------------------



CATEGORY	A	B	C	D
CIRCLING	720-1	587 (600-1)	920-2¼ 787 (800-2¼)	NA

MIRL Rwy 7-25