

LOC/DME I-LBJ <b>110.7</b> Chan <b>44</b>	APP CRS <b>047°</b>	Rwy Ldg TDZE Apt Elev	<b>5000</b> <b>1642</b> <b>1642</b>
---	------------------------	-----------------------------	---

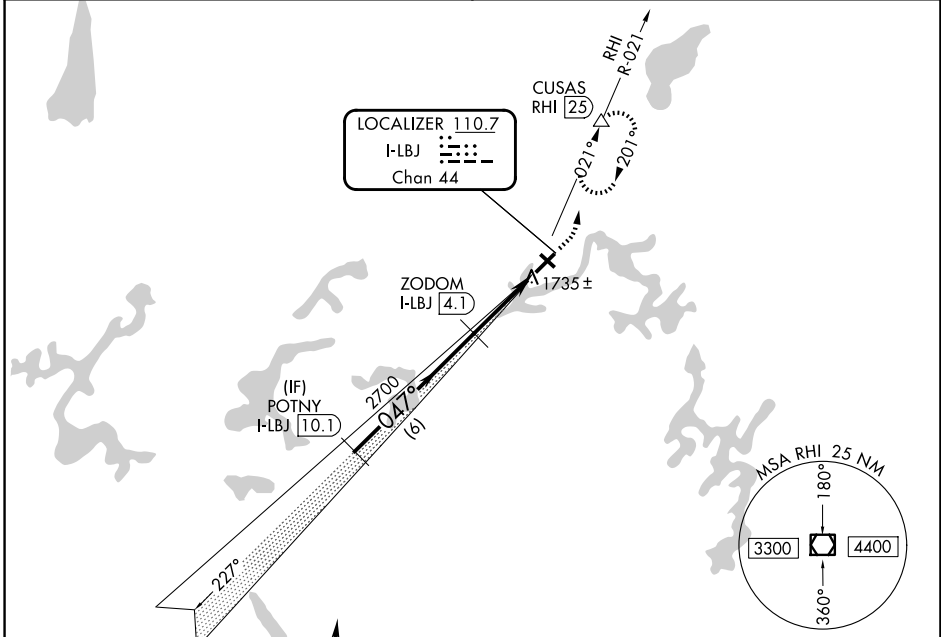
# LOC/DME RWY 4

EAGLE RIVER UNION (EGV)

**NA** Rwy 4 helicopter visibility reduction below 3/4 SM NA. When local altimeter setting not received, use Minocqua-Woodruff altimeter setting and increase all MDAs 60 feet and Circling Cat C/D visibility 1/4 SM. Circling Rwy 13, 31 NA at night.

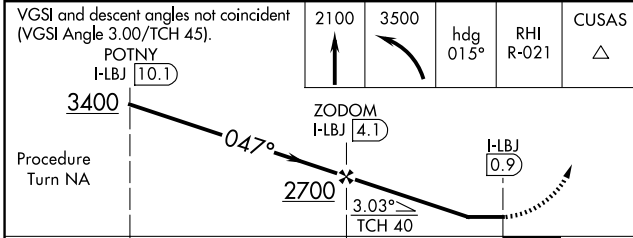
**MISSED APPROACH:** Climb to 2100 then climbing left turn to 3500 on heading 015° and RHI R-021 to CUSAS/RHI 25 DME and hold.

AWOS-3 <b>118.325</b>	MINNEAPOLIS CENTER <b>133.65 281.5</b>	UNICOM <b>122.8</b> (CTAF) <b>1</b>
--------------------------	---	--

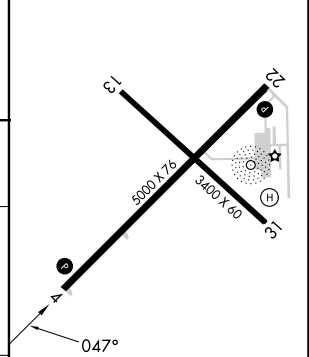


Procedure NA for arrivals at RHI VOR/DME via V191 southeast bound, V63 southbound.

IAF RHINELANDER 115.05 RHI Chan 97(Y)



ELEV 1642	TDZE 1642
-----------	-----------



CATEGORY	A	B	C	D
S-4	2000-1 358 (400-1)			
CIRCLING	2120-1 478 (500-1)		2260-1 3/4 618 (700-1 3/4) 2340-2 1/4 698 (700-2 1/4)	

REIL Rws 4 and 22 **1**  
MIRL Rws 4-22 and 13-31 **1**

EC-3, 11 JUN 2026 to 09 JUL 2026

EC-3, 11 JUN 2026 to 09 JUL 2026