

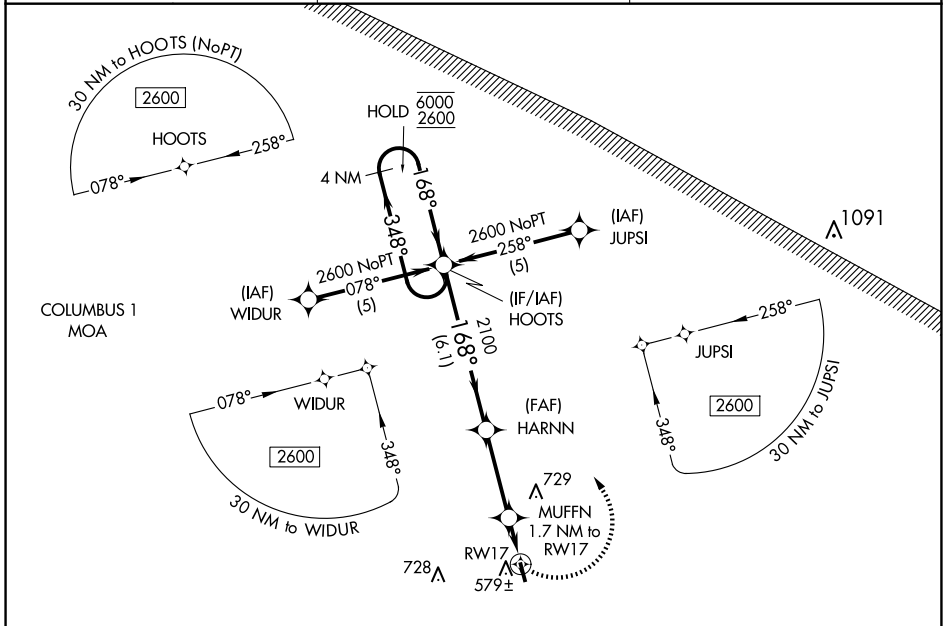
APP CRS	Rwy Idg	3613
168°	TDZE	463
	Apt Elev	463

RNAV (GPS) RWY 17

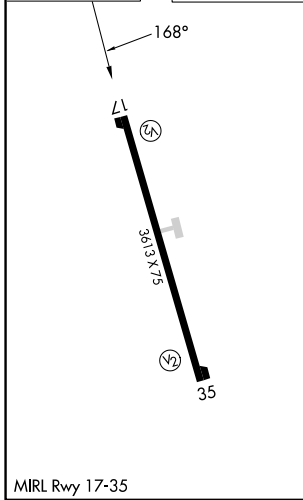
LAMAR COUNTY (M55)

RNP APCH.	<p>▼ Rwy 17 helicopter visibility reduction below 1 SM NA. Use Columbus AFB altimeter setting. Procedure NA at night.</p> <p>▲ NA</p>	<p>MISSED APPROACH: Climbing left turn to 2600 direct HOOTs and hold.</p>
-----------	---	--

KCBM ATIS★ 115.2 273.5	COLUMBUS APP CON★ 126.075 239.25	CTAF 122.9
----------------------------------	--	----------------------



ELEV 463	TDZE 463
-----------------	-----------------



4 NM Holding Pattern				2600	HOOTs
<p>6.1 NM 3.3 NM 1.7 NM</p>					
CATEGORY	A	B	C	D	
LNAV MDA	960-1	497 (500-1)	960-1 3/8 497 (500-1 3/8)	960-1 1/2 497 (500-1 1/2)	
CIRCLING	1100-1	637 (700-1)	1180-2 717 (800-2)	1180-2 1/4 717 (800-2 1/4)	

SE-4, 11 JUN 2026 to 09 JUL 2026

SE-4, 11 JUN 2026 to 09 JUL 2026