

APP CRS <b>180°</b>	Rwy Ldg TDZE Apt Elev	<b>3460</b> <b>205</b> <b>205</b>
------------------------	-----------------------------	---

# RNAV (GPS) RWY 18

MCCHAREN FLD (M83)

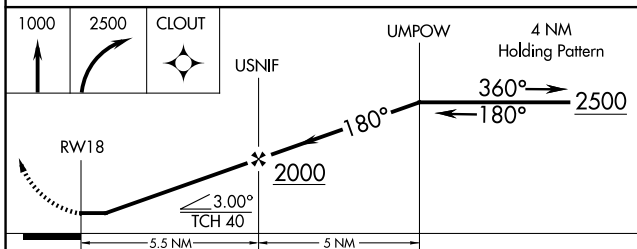
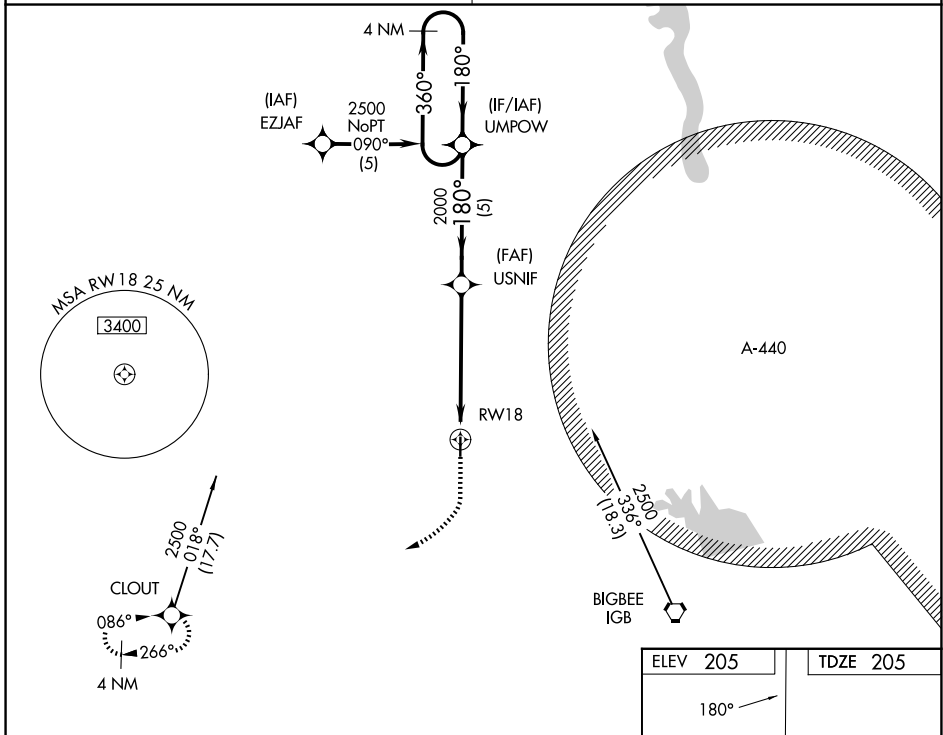
**▽** Use Golden Triangle Rgnl altimeter setting, when not received, use Columbus AFB altimeter setting. DME/DME RNP-0.3 NA. Helicopter visibility reduction below 1 SM NA. Procedure NA at night.

**△ NA**

**MISSED APPROACH:** Climb to 1000 then climbing right turn to 2500 direct CLOUT and hold.

**COLUMBUS APP CON\***  
**135.6 323.275**

**CTAF**  
**122.9**



ELEV 205	TDZE 205
180°	
81	
3650 X 75	
36	
MIRL Rwy 18-36	

CATEGORY	A	B	C	D
GLS DA		NA		
LNAV/VNAV DA		NA		
LNAV MDA	980-1 775 (800-1)	980-1¼ 775 (800-1¼)	980-2½ 775 (800-2½)	NA
CIRCLING	980-1 775 (800-1)	1020-1¼ 815 (900-1¼)	1020-2½ 815 (900-2½)	NA

SC-4, 11 JUN 2026 to 09 JUL 2026

SC-4, 11 JUN 2026 to 09 JUL 2026