

WAAS CH <b>97538</b> <b>W13A</b>	APP CRS <b>138°</b>	Rwy Ldg TDZE <b>5101</b> <b>1910</b>	Apt Elev <b>1910</b>
--	------------------------	--	-------------------------

# RNAV (GPS) RWY 13

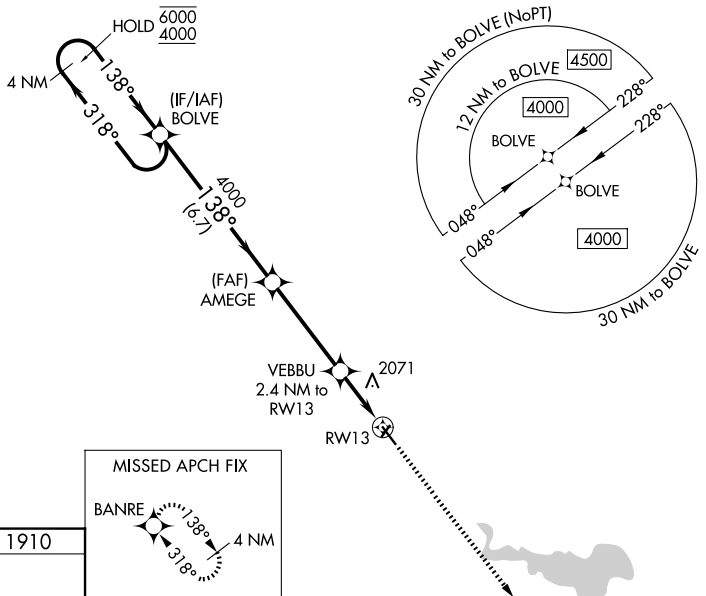
PHILLIPSBURG MUNI (PHG)

RNP APCH - GPS.

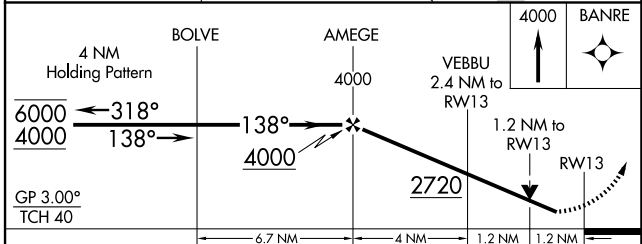
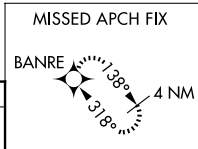
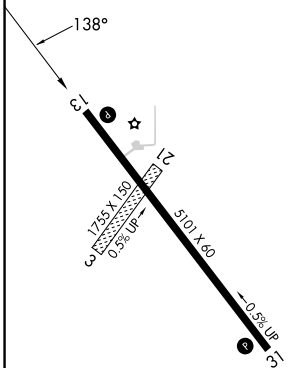
**NA** Rwy 13 helicopter visibility reduction below 3/4 SM NA. Circling NA northeast of Rwy 13-31. For uncompensated Baro-VNAV systems, LNAV/VNAV NA below -18°C or above 54°C. Circling NA to Rwy 3 and 21. Baro-VNAV and VDP NA when using HYS altimeter setting. When local altimeter setting not received, use HYS altimeter setting and increase LPV DA to 2296 feet and all visibilities 1/2 SM. Increase LNAV/VNAV DA to 2497 feet and all visibilities 3/8 SM. Increase all MDA 140 feet and LNAV visibility Cat C 3/8 SM, and Circling visibility Cat C 1/4 SM.

MISSED APPROACH: Climb to 4000 direct BANRE and hold.

AWOS-3PT <b>119.125</b>	DENVER CENTER <b>132.7 226.675</b>	UNICOM <b>122.8 (CTAF) 0</b>
----------------------------	---------------------------------------	---------------------------------



ELEV 1910 TDZE 1910



CATEGORY	A	B	C	D
LPV DA	2160-1	250 (300-1)		NA
LNAV/VNAV DA	2361-1 3/8	451 (500-1 3/8)		NA
LNAV MDA	2340-1	430 (500-1)	2340-1 1/4 430 (500-1 1/4)	NA
CIRCLING	2340-1 430 (500-1)	2360-1 450 (500-1)	2380-1 1/2 470 (500-1 1/2)	NA

MIRL Rwy 13-31  
REIL Rwy 13 and 31

NC-2, 11 JUN 2026 to 09 JUL 2026

NC-2, 11 JUN 2026 to 09 JUL 2026