

WAAS CH 93635 W32A	APP CRS 324°	Rwy Ldg TDZE 448 Apt Elev 455
--	------------------------	---

RNAV (GPS) RWY 32

WHITE MOUNTAIN RGNL (IZG)

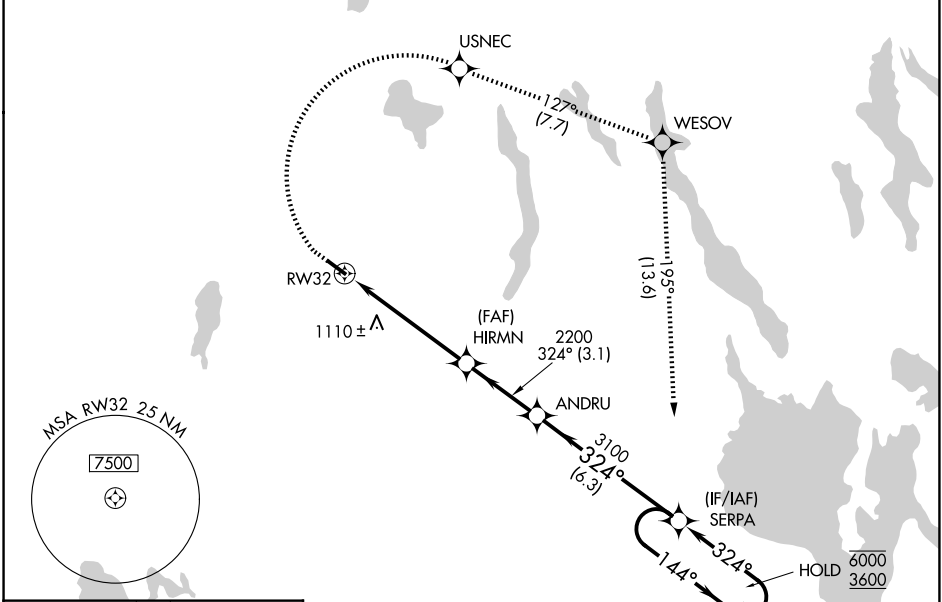
RNP APCH - GPS.

⚠ Rwy 32 helicopter visibility reduction below 3/4 SM NA. VDP NA when using LEW altimeter setting. Circling Rwy 14 NA at night. When local altimeter setting not received, use LEW altimeter setting and increase LPV DA to 1005 feet and all visibilities 1/2 SM; increase all MDAs 100 feet and LNAV visibility Cat B/C 1/2 SM, and Circling visibility Cat B 1/4 SM.

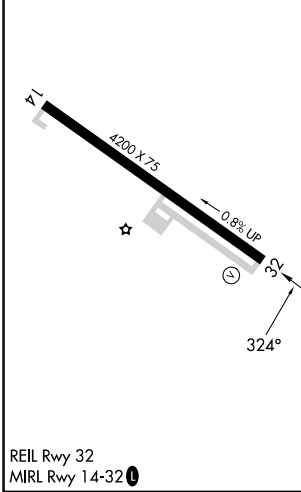
❄ -28°C

MISSED APPROACH: Climb to 1490 then climbing right turn to 3600 direct USNEC and on track 127° to WESOV and on track 195° to SERPA and hold.

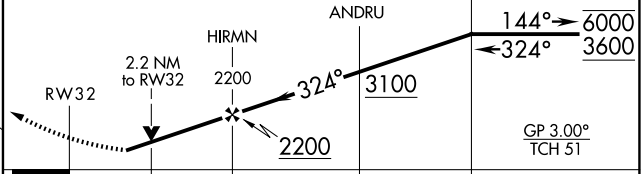
ASOS 135.775	PORTLAND APP CON * 119.75 269.35	UNICOM 122.8 (CTAF)
------------------------	--	-------------------------------



ELEV 455	TDZE 448
-----------------	-----------------



1490	3600	USNEC	tr 127°	WESOV	tr 195°	SERPA	VGSI and RNAV glidepath not coincident (VGSI Angle 3.00/TCH 17).
------	------	-------	---------	-------	---------	-------	--



CATEGORY	A	B	C	D
LPV DA	914-1 3/8		466 (500-1 3/8)	NA
LNAV MDA	1140-1 692 (700-1)		1140-2 692 (700-2)	NA
CIRCLING	1340-1 1/4 885 (900-1/4)	1400-1 1/2 945 (1000-1/2)	1560-3 1105 (1200-3)	NA

NE-1, 11 JUN 2026 to 09 JUL 2026

NE-1, 11 JUN 2026 to 09 JUL 2026