


LOC I-GTR 110.7	APP CRS 182°	Rwy Ldg 8003
		TDZE 264
		Apt Elev 264

ILS or LOC RWY 18

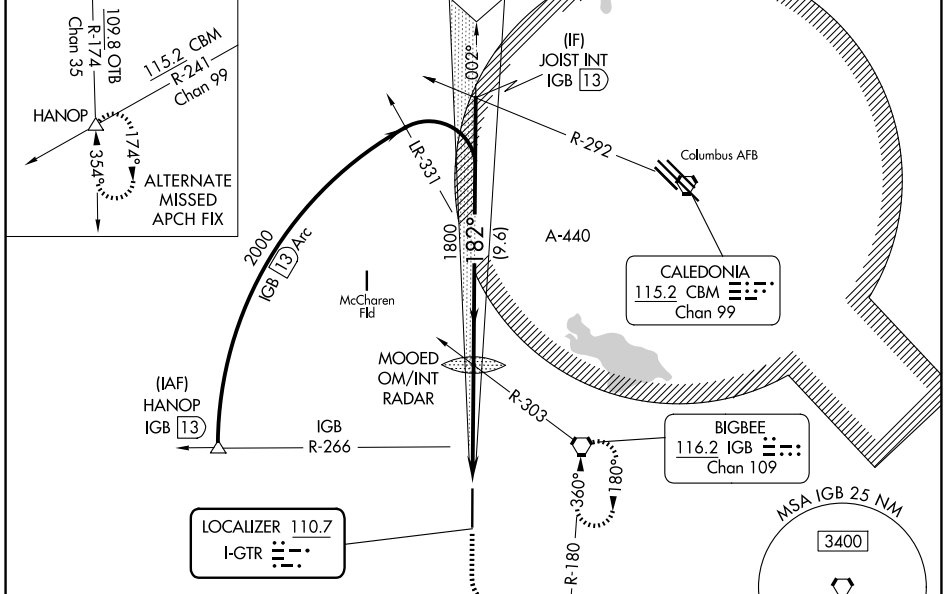
GOLDEN TRIANGLE RGNL (GTR)

▲ For inop ALS, increase S-ILS 18 Cat E visibility to 3/4 SM, S-LOC 18 Cat E visibility to 1 1/2 SM.

MALSR


MISSED APPROACH: Climb to 1000 then climbing left turn to 2100 on heading 090° and on IGB VORTAC R-180 to IGB VORTAC and hold, continue climb-in-hold to 2100.

ATIS 126.375	COLUMBUS APP CON★ 135.6 323.275	GOLDEN TRIANGLE TOWER★ 118.2 (CTAF) 298.875	GND CON 135.375 322.475	UNICOM 122.95
------------------------	---	---	-----------------------------------	-------------------------



ELEV 264	TDZE 264
----------	----------

HIRL Rwy 18-36	FAF to MAP 4.5 NM
----------------	-------------------

Knots	60	90	120	150	180
Min:Sec	4:30	3:00	2:15	1:48	1:30

1000	2100	IGB R-180	IGB
------	------	-----------	-----

MOOD OM/INT RADAR 1757

JOIST INT IGB 13

2000

1800

GS 3.00° TCH 58

4.5 NM 9.6 NM

CATEGORY	A	B	C	D	E
S-ILS 18	464-1/2 200 (200-1/2)				
S-LOC 18	660-1/2	396 (400-1/2)	660-5/8		396 (400-5/8)
CIRCLING	760-1	496 (500-1)	960-2 696 (700-2)	960-2 1/4 696 (700-2 1/4)	960-2 1/2 696 (700-2 1/2)

SC-4, 11 JUN 2026 to 09 JUL 2026

SC-4, 11 JUN 2026 to 09 JUL 2026