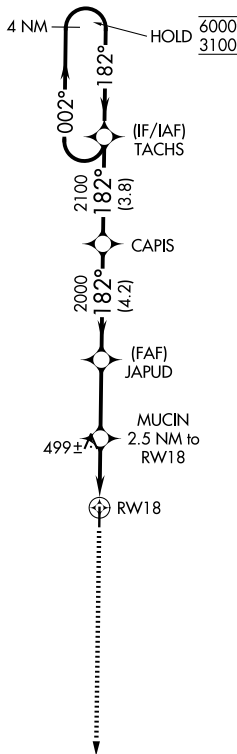
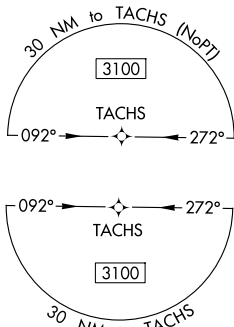


WAAS CH 45543 W18A	APP CRS 182°	Rwy Ldg TDZE 273 Apt Elev 273
--	------------------------	---

RNAV (GPS) RWY 18

POCAHONTAS MUNI (M7 \emptyset)

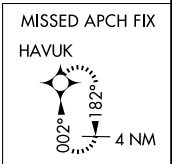
RNP APCH.	MISSED APPROACH: Climb to 3100 direct HAVUK and hold.	
Rwy 18 helicopter visibility reduction below 3/4 SM NA. Baro-VNAV NA. Use Walnut Ridge altimeter setting.		
ARG AWOS-3PT 126.525	MEMPHIS CENTER 120.075 289.4	UNICOM 122.8 (CTAF) \emptyset



SC-1, 11 JUN 2026 to 09 JUL 2026

SC-1, 11 JUN 2026 to 09 JUL 2026

ELEV 273	TDZE 273
182° 81 \emptyset 4000 X 75 36 \emptyset	
REIL Rwy 18 and 36 \emptyset MIRL Rwy 18-36 \emptyset	



3100	HAVUK	TACHS	4 NM Holding Pattern	
182° 002° → 6000 ← 182° 3100		182° 2100 2000 GP 3.00° TCH 40		
2.5 NM 2.8 NM 4.2 NM 3.8 NM		RW18 MUCIN 2.5 NM to RW18 JAPUD 2000 CAPIS TACHS		
CATEGORY	A	B	C	D
LPV DA	571-1 298 (300-1)			
LNAV/VNAV DA	733-1 3/8 460 (500-1 3/8)			
LNAV MDA	780-1 507 (600-1)		780-1 3/8 507 (600-1 3/8)	
CIRCLING	900-1 627 (700-1)		1100-2 1/2 827 (900-2 1/2)	1100-2 3/4 827 (900-2 3/4)