

|  |                        |   |
|--|------------------------|---|
| WAAS<br>CH <b>66008</b><br><b>W18A</b> | APP CRS<br><b>181°</b> | Rwy Idg <b>5002</b><br>TDZE <b>239</b><br>Apt Elev <b>239</b> |
|--|------------------------|---|

# RNAV (GPS) RWY 18

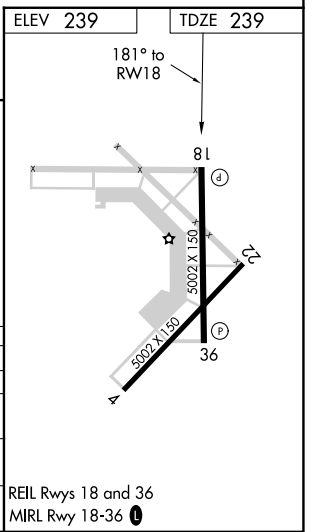
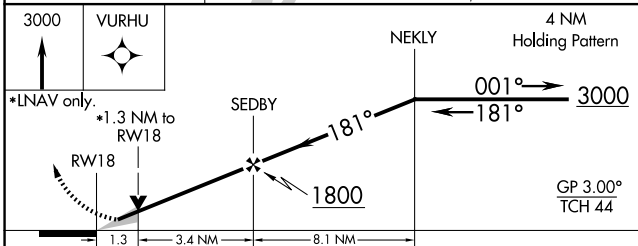
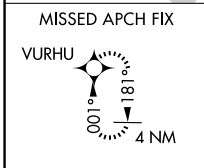
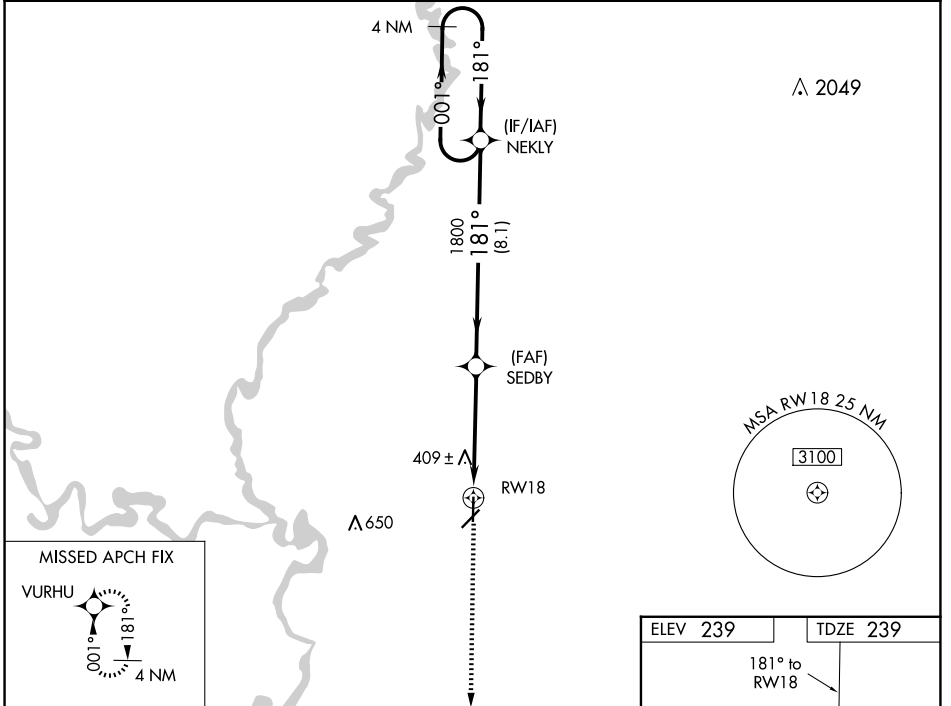
NEWPORT RGNL (M19)

RNP APCH-GPS.

**▼** When local altimeter setting not received, use Batesville altimeter setting: increase LPV DA to 575 feet and all visibilities ½ SM; increase LNAV/VNAV DA to 845 feet and all visibilities ½ SM; increase all MDAs 100 feet and visibility Cats C ¼ SM and D ½ SM. VDP NA when using Batesville altimeter setting. For uncompensated Baro-VNAV systems, LNAV/VNAV NA below -15°C or above 54°C. Baro-VNAV NA when using Batesville altimeter setting.

**MISSED APPROACH:** Climb to 3000 direct VURHU and hold.

|                           |  |                                 |
|---------------------------|--|---------------------------------|
| AWOS-3PT<br><b>118.15</b> | MEMPHIS CENTER<br><b>120.075 289.4</b> | UNICOM<br><b>122.8 (CTAF) ①</b> |
|---------------------------|--|---------------------------------|



| CATEGORY     | A                       | B           | C                            | D                            |
|--------------|-------------------------|-------------|------------------------------|------------------------------|
| LPV DA       | 489-3/4 250 (300-3/4)   |             |                              |                              |
| LNAV/VNAV DA | 759-13/4 520 (600-13/4) |             |                              |                              |
| LNAV MDA     | 700-1                   | 461 (500-1) | 700-1 1/4<br>461 (500-1 1/4) | 700-1 1/2<br>461 (500-1 1/2) |
| CIRCLING     | 760-1                   | 521 (600-1) | 760-1 1/2<br>521 (600-1 1/2) | 900-2<br>661 (700-2)         |

REIL Rwy 18 and 36  
MIRL Rwy 18-36 ①

SC-1, 11 JUN 2026 to 09 JUL 2026

SC-1, 11 JUN 2026 to 09 JUL 2026