

WAAS CH 93735 W02A	APP CRS 018°	Rwy Ldg TDZE 262 Apt Elev 262
--	------------------------	---

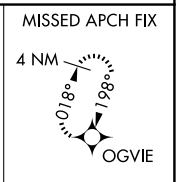
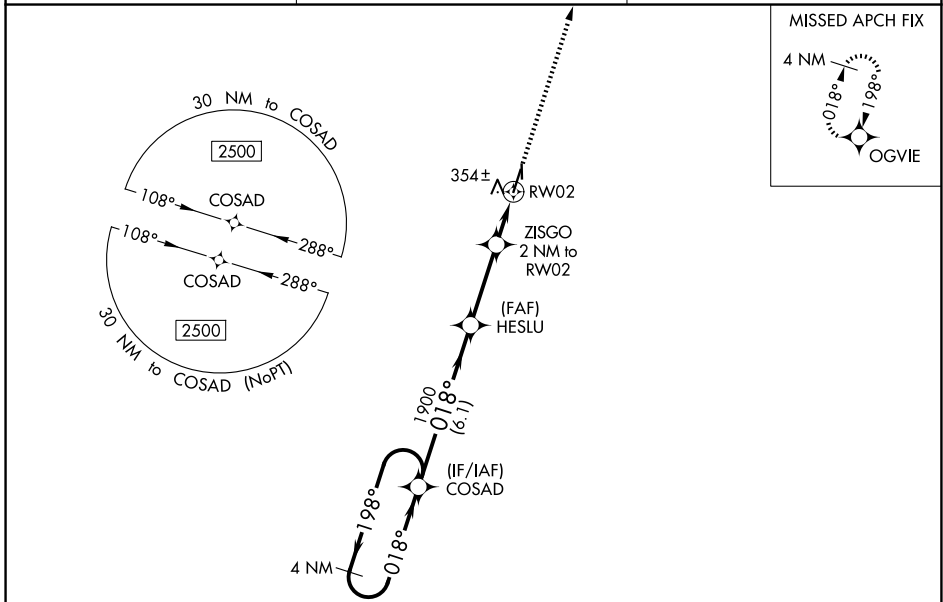
RNAV (GPS) RWY 2

KENNETT MEML (TKX)

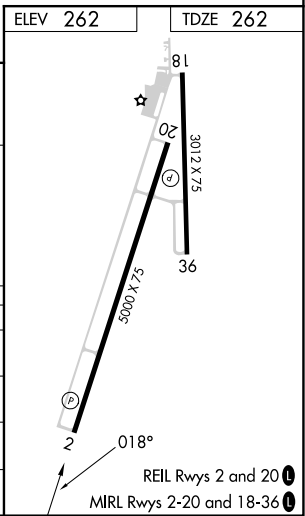
⚠ NA Circling to Rwy 18/36 NA at night. For uncompensated Baro-VNAV systems, LNAV/VNAV NA below -16°C (4°F) or above 54°C (130°F). Circling NA west of Rws 2 and 18. DME/DME RNP-0.3 NA. When local altimeter setting not received, use Blytheville altimeter setting and increase all DA 47 feet and all MDA 60 feet; increase LNAV/VNAV visibility all Cats and LNAV Cats C/D visibility 1/8 mile; increase Circling Cat D visibility 1/4 mile. Helicopter visibility reduction below 1 SM NA. Rwy 2 Straight-in and Circling minimums NA at night.

MISSED APPROACH:
Climb to 2500 direct OGVIE and hold.

AWOS-3PT 119.05	MEMPHIS CENTER 120.075 289.4	UNICOM 122.8 (CTAF) 0
---------------------------	--	---------------------------------



ELEV 262	TDZE 262
4 NM Holding Pattern	2500 OGVIE
GP 3.00° TCH 40	*LNAV only.
2500 ← 198° 018° →	HESLU 1900
018°	ZISGO 2 NM to RWY 2
1900	RWY 2
6.1 NM	*920
3 NM	
2 NM	
CATEGORY	A B C D
LPV DA	512-1 250 (300-1)
LNAV/VNAV DA	538-1 276 (300-1)
LNAV MDA	620-1 358 (400-1)
CIRCLING	660-1 720-1 720-1½ 900-2 398 (400-1) 458 (500-1) 458 (500-1½) 638 (700-2)



NC-3, 11 JUN 2026 to 09 JUL 2026

NC-3, 11 JUN 2026 to 09 JUL 2026