

WAAS CH 93922 W17A	APP CRS 172°	Rwy Ldg TDZE Apt Elev	4305 1616 1616
--	------------------------	-----------------------------	---

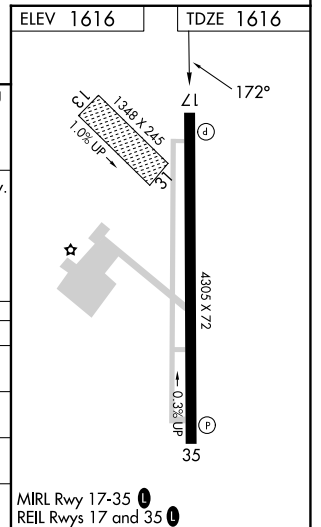
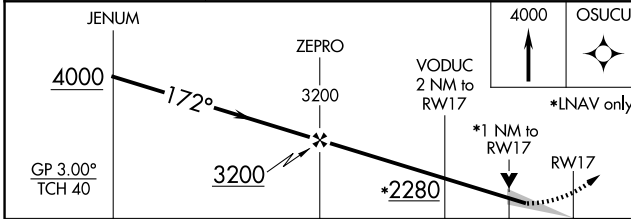
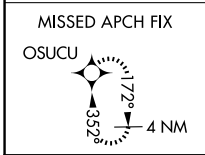
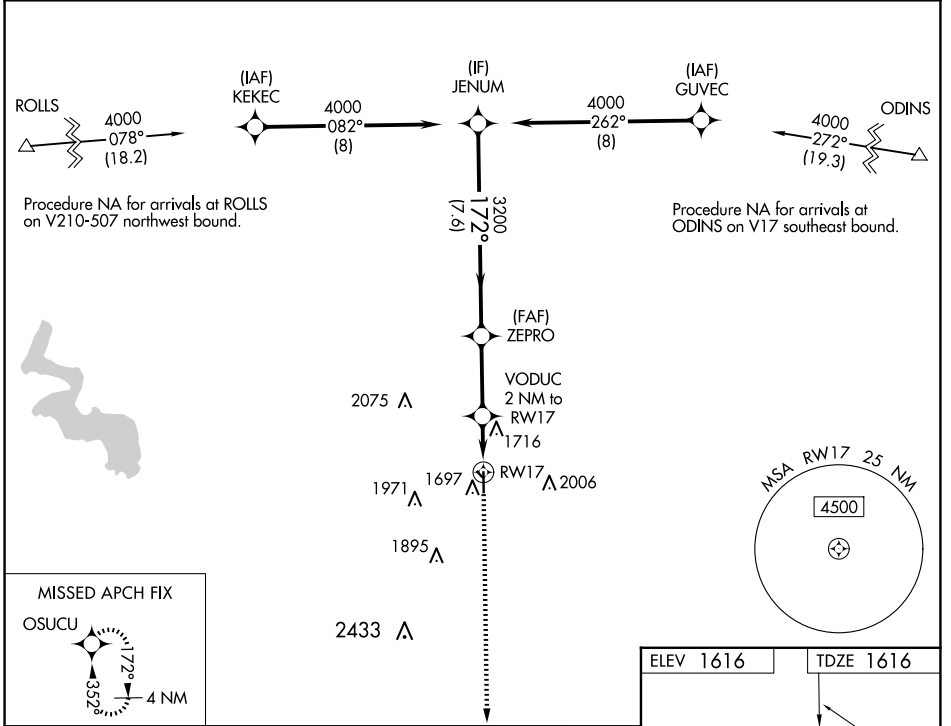
RNAV (GPS) RWY 17

CLINTON RGNL (CLK)

⚠ DME/DME RNP-0.3 NA. For uncompensated Baro-VNAV systems, LNAV/VNAV NA below -12°C (11°F) or above 54°C (130°F). Circling NA to Rwy 13 and 31. When local altimeter setting not received, use Weatherford altimeter setting; Increase DA to 1898 and all visibilities ½ mile; increase all MDA 40 feet and visibility Cat C ¼ mile. Baro-VNAV and VDP NA when using Weatherford altimeter setting.

MISSED APPROACH: Climb to 4000 direct OSUCU and hold.

AWOS-3 119.225	FORT WORTH CENTER 128.4 269.37	UNICOM 122.8 (CTAF) 0
--------------------------	--	---------------------------------



CATEGORY	A		B		C		D	
	1	2	1	2	1	2	1	2
LPV DA	1866-7/8		250 (300-7/8)				NA	
LNAV/VNAV DA	1866-7/8		250 (300-7/8)				NA	
LNAV MDA	1980-1		364 (400-1)				NA	
CIRCLING	2100-1 484 (500-1)		2220-1 604 (700-1)		2320-2 704 (800-2)		NA	

SC-1, 11 JUN 2026 to 09 JUL 2026

SC-1, 11 JUN 2026 to 09 JUL 2026