

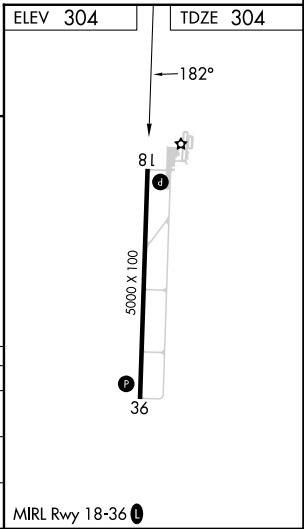
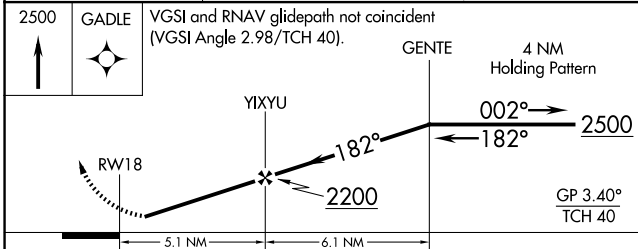
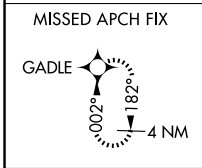
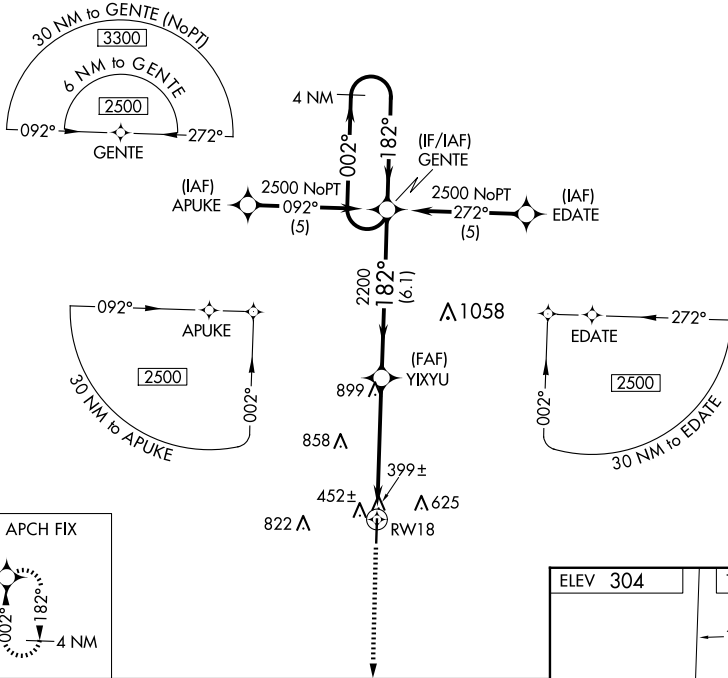
WAAS CH <b>62808</b> <b>W18A</b>	APP CRS <b>182°</b>	Rwy Idg TDZE Apt Elev	<b>5000</b> <b>304</b> <b>304</b>
--	------------------------	-----------------------------	---

# RNAV (GPS) RWY 18

DEXTER MUNI (DXE)

RNP APCH.	<p><b>MISSED APPROACH:</b> Climb to 2500 direct GADLE and hold.</p>
<p><b>▼</b> Baro-VNAV NA. Use Poplar Bluff altimeter setting, when not received use Cape Girardeau Rgnl altimeter setting and increase all DA 33 feet and LPV visibilities ¼ mile all Cats and increase all MDA 40 feet. Rwy 18 helicopter visibility reduction below ¾ SM NA.</p>	

POF ASOS <b>124.225</b>	MEMPHIS CENTER <b>133.65 292.15</b>	UNICOM <b>122.7 (CTAF) 0</b>
----------------------------	--	---------------------------------



CATEGORY	A	B	C	D
LPV DA	724-1¼	420 (500-1¼)		NA
LNAV/VNAV DA	854-1¾	550 (600-1¾)		NA
LNAV MDA	1200-1¼	896 (900-1¼)	1200-2¾ 896 (900-2¾)	NA

NC-3, 11 JUN 2026 to 09 JUL 2026

NC-3, 11 JUN 2026 to 09 JUL 2026