

WAAS CH 69538 W01A	APP CRS 011°	Rwy Ldg 4802 TDZE 358 Apt Elev 358
--	------------------------	---

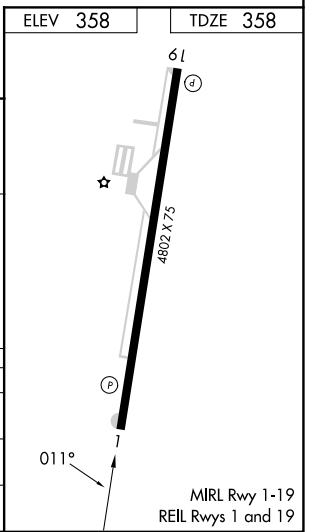
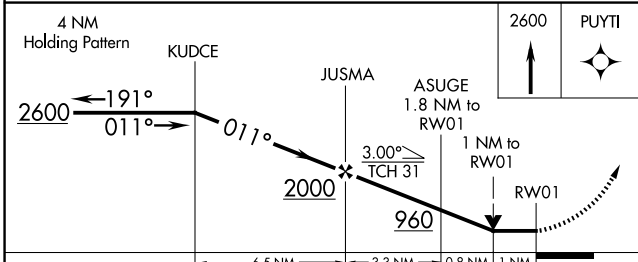
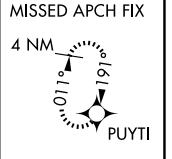
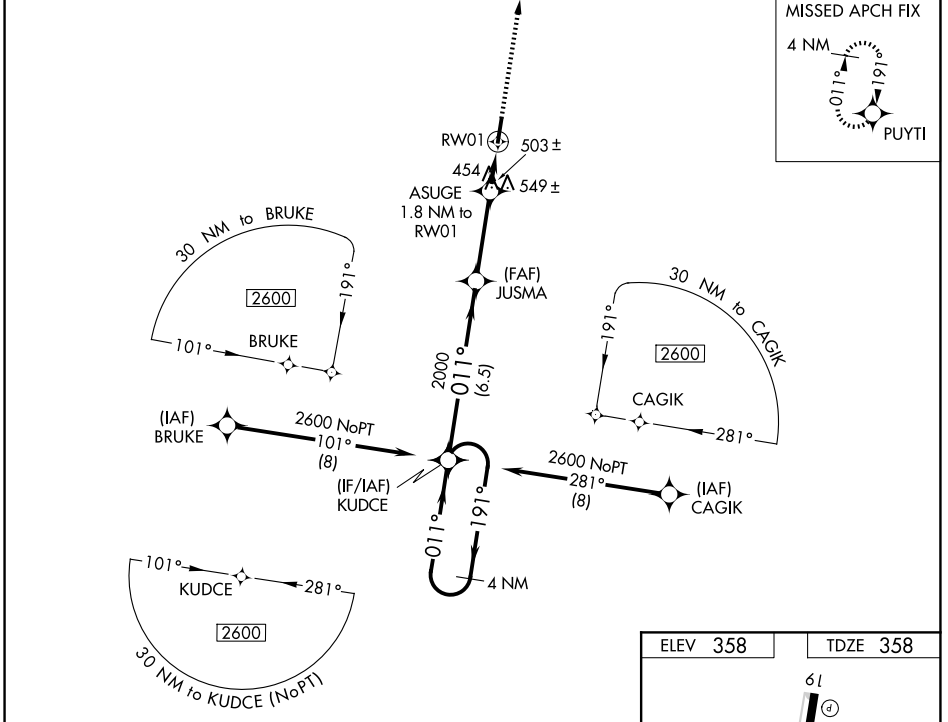
RNAV (GPS) RWY 1

GIBSON COUNTY (TGC)

▼ NA Night landing: Rwy 19 NA. DME/DME RNP-0.3 NA. Helicopter visibility reduction below 3/4 SM NA. Obtain local altimeter setting on CTAF; when not received use Jackson Rgnl altimeter setting and increase all MDA 60 feet, increase Circling Cat C visibility 1/4 mile.

MISSED APPROACH: Climb to 2600 direct PUYTI and hold.

MEMPHIS CENTER **134.65 316.15** UNICOM **122.8** (CTAF)



CATEGORY	A	B	C	D
LP MDA	720-1 362 (400-1)			
RNAV MDA	800-1 442 (500-1)	800-1 3/8 442 (500-1 3/8)		
CIRCLING	980-1 622 (700-1)	980-1 3/4 622 (700-1 3/4)	1780-3 1422 (1500-3)	

SE-1, 11 JUN 2026 to 09 JUL 2026

SE-1, 11 JUN 2026 to 09 JUL 2026