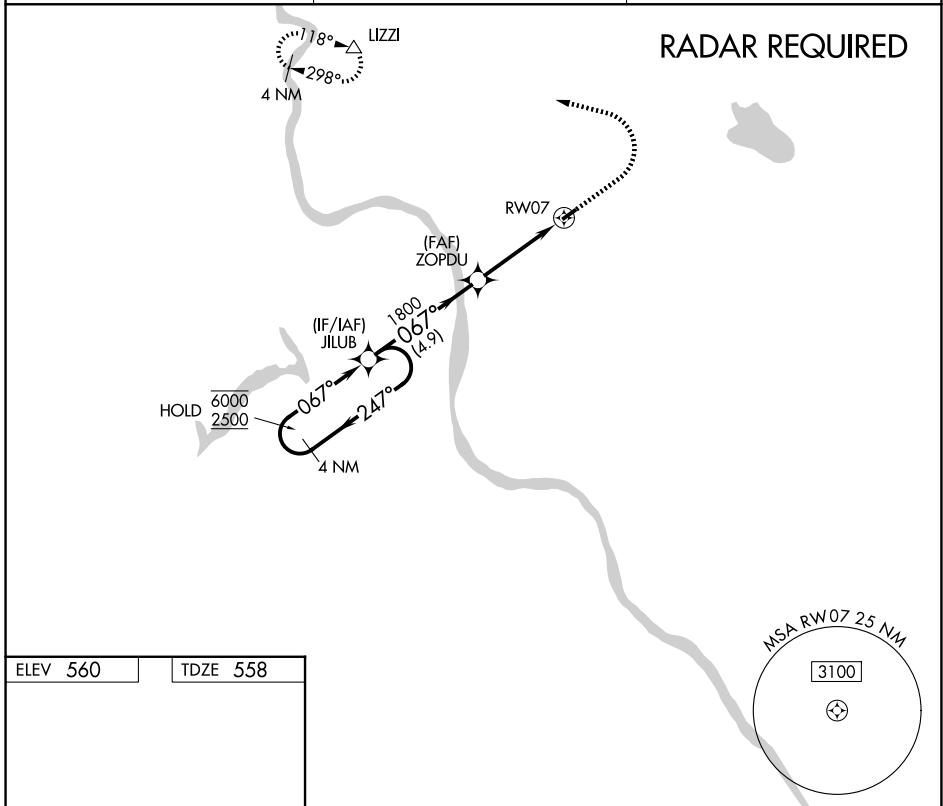


APP CRS 067°	Rwy Ldg 2900
	TDZE 558
	Apt Elev 560

RNAV (GPS) RWY 7

SKY MANOR (N40)

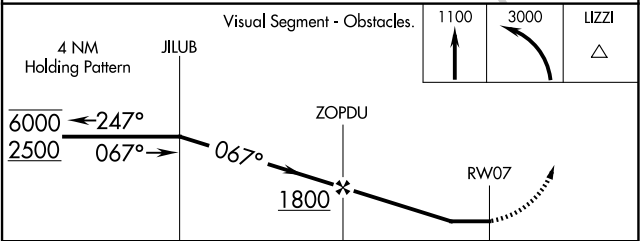
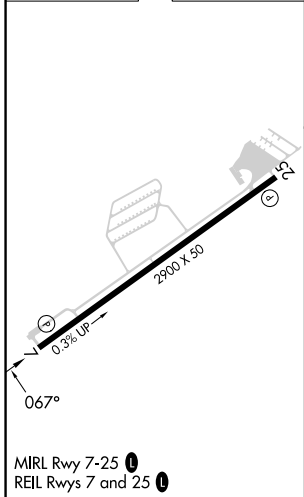
RNP APCH: ▼ ▲ Procedure NA at night. When local altimeter setting not received, use Lehigh Valley Intl altimeter setting. Rwy 7 helicopter visibility reduction below 1 SM NA.	MISSED APPROACH: Climb to 1100 then climbing left turn to 3000 direct IZZI and hold.
AWOS-3 121.725	ALLENTOWN APP CON 119.65 124.45 351.8
	UNICOM 122.975 (CTAF) 0



NE-2, 11 JUN 2026 to 09 JUL 2026

NE-2, 11 JUN 2026 to 09 JUL 2026

ELEV 560	TDZE 558
----------	----------



CATEGORY	A	B	C	D
LNAV MDA	1080-1 522 (600-1)		NA	
CIRCLING	1140-1 580 (600-1)		NA	